

TABLE OF ORGANIZATION)
 AND EQUIPMENT)
 NR. 55-46D)

HEADQUARTERS
 DEPARTMENT OF THE ARMY
 Washington 25, D. C., 22 January 1959

HEADQUARTERS AND HEADQUARTERS DETACHMENT
 TRANSPORTATION TACTICAL CARRIER BATTALION

Designation: Headquarters, _____ Transportation Battalion
 (Tactical Carrier)
 Headquarters Detachment, _____ Transportation Battalion
 (Tactical Carrier)

	Page
Section I. General:	
Organization - - - - -	1
Equipment- - - - -	3
II. Organization (Personnel):	
Distribution - - - - -	7
Recapitulation - - - - -	7
Remarks- - - - -	10
III. Equipment:	
Distribution - - - - -	11
Recapitulation - - - - -	14
Remarks- - - - -	15

SECTION I

GENERAL

ORGANIZATION

1. MISSION. To provide command and administration for transportation tactical carrier companies.

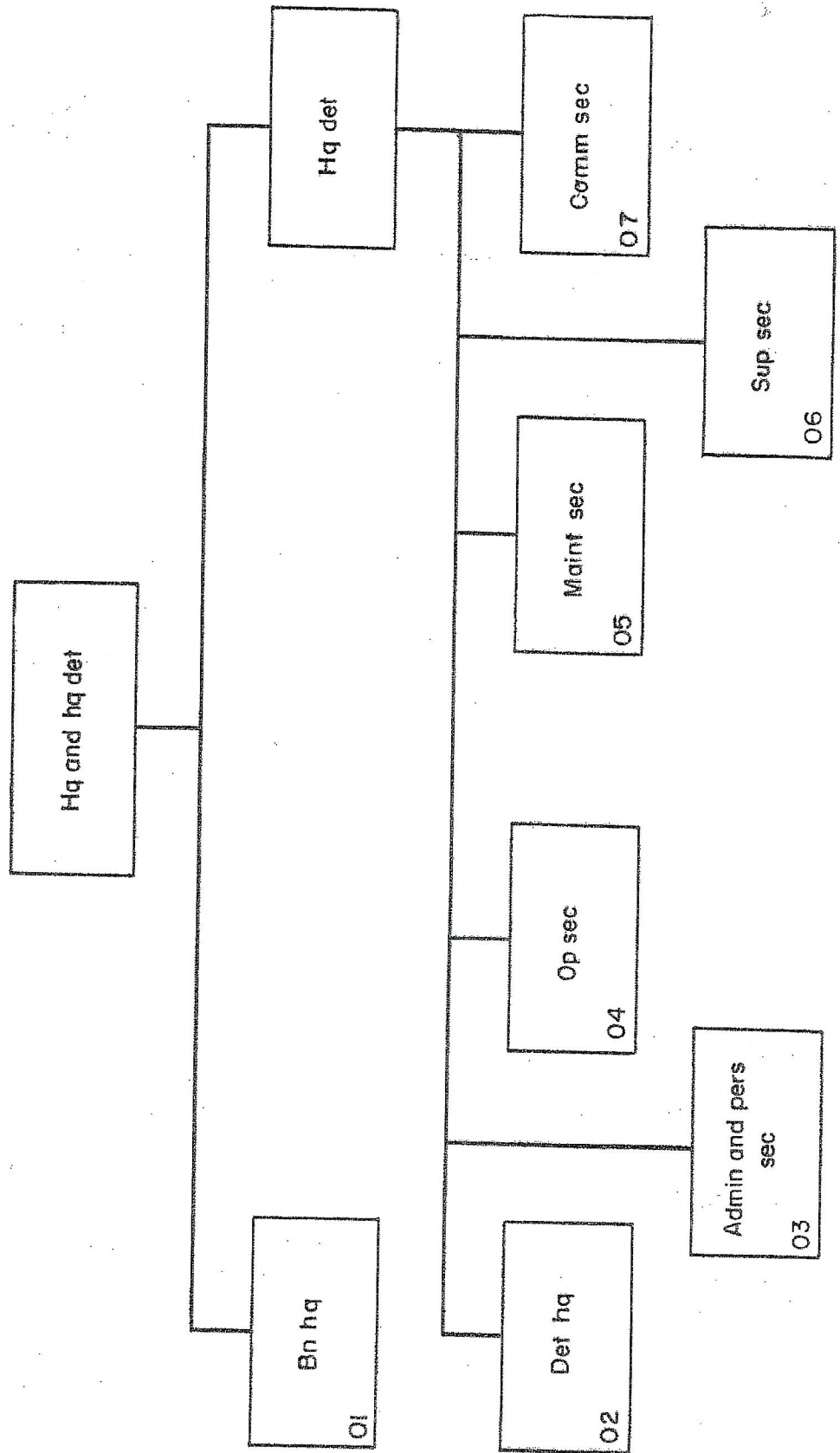
2. ASSIGNMENT. To a corps or a field army.

3. CAPABILITIES. a. At full strength this unit provides the following facilities:

(1) Command, staff planning, coordination, and supervision of three to six Transportation Tactical Carrier Companies, TOE 55-47.

(2) Within basic policies, establishing procedures for operation of tactical carriers in accordance with the requirements of the commander to which assigned.

HEADQUARTERS AND HEADQUARTERS DETACHMENT
TRANSPORTATION TACTICAL CARRIER BATTALION



(3) Promulgating standing operating procedures to be followed by subordinate units.

(4) The evaluating of the area traffic plan and recommending the best routings to be used for the forward (or lateral) movement of carrier units to their new operational area.

(5) Assigning tasks to subordinate units for the accomplishment of the tactical mission.

(6) Supervising and directing the accomplishment of operational assignments by subordinate units.

(7) Supervising, coordinating and assisting subordinate units in matters of administration, supply, maintenance, training and communications.

b. The reduced strength column adapts this Table of Organization and Equipment to the lesser requirements for personnel consistent with a one shift, 10-hour, day during prolonged noncombat periods and for a limited period of combat.

c. This TOE is not adaptable to Type B organization.

d. Individuals of this unit can fight as infantrymen when required. This unit has the capability of defending itself and its installations against hostile ground attack.

4. BASIS OF ALLOCATION. One per four Transportation Tactical Carrier Companies, TOE 55-47. Normally, two per corps.

5. CATEGORY. This unit is designated a Category II unit (Reference Unit Categories, SR 320-5-1).

6. MOBILITY. Eighty percent mobile.

EQUIPMENT

1. This table is in accordance with AR 310-2 and AR 310 series, and, together with documents listed in paragraph 3, is the authority to requisition and issue, in accordance with pertinent Department of the Army directives, all items listed herein unless otherwise indicated.

2. When there appears to be a discrepancy between the allowances shown in Section III, Equipment, strength column and the basis of distribution as indicated in the "Remarks" column, the amount shown in the strength column will govern.

3. Items of clothing, equipment, components of sets and kits, spare parts, accessories, special tools, and allowances of expendable items, as contained in the following publications, are authorized so far as they pertain to the allowances for the organization and/or individuals covered by this table.

a. Supply Manuals and expendable TA.

Chemical Corps.

Pam 310-23, Index of Supply Manuals--Chemical Corps.
TA 3-104, Allowances of Chemical Corps Expendable Supplies.

Corps of Engineers.

Pam 310-25, Index of Supply Manuals--Corps of Engineers.

Army Medical Service.

Department of the Army Supply Manual 8-1 and 5 series.

Ordnance Corps.

Pam 310-29, Index of Supply Manuals--Ordnance Corps.

Quartermaster Corps.

Pam 310-30, Index of Supply Manuals--Quartermaster Corps.
TA 10-100, Allowances of Quartermaster Expendable Supplies.
TA 10-100-12, Allowances of Insect and Rodent Control Supplies.

Signal Corps.

Pam 310-21, Index of Supply Manuals--Signal Corps.
TA 11-101 (55-46), Allowances of Signal Corps Expendable Supplies for Headquarters and Headquarters Detachment, Transportation Tactical Carrier Battalion, when published.

b. Regulations.

AR 310-1, Military Publications--General Policies.
AR 370-5, Qualification in Arms--Qualification and Familiarization.
AR 700-8400-1, Issue and Sale of Personal Clothing.
AR 711-16, Installation Stock Control and Supply Procedures.
AR 715-835, Local Procurement of Medical Supplies and Equipment.

- AR 725-350, Local Purchase and Requisitioning of Chemical Expendable Items.
- AR 725-550, Local Purchase and Requisitioning of General Engineer Expendable Items.
- AR 725-850, Local Purchase and Requisitioning of Army Medical Service Expendable Items.
- AR 725-950, Local Purchase and Requisitioning of Ordnance Expendable Items (Except for Ammunition and Guided Missiles).
- AR 756-405, Sale of Quartermaster General Supplies Property.

c. Other applicable TA.

- TA 20-2, Equipment for Training Purposes.
- TA 20-4, Food Service Equipment for Field Installations, Troop and Hospital Trains and Army Vessels.
- TA 20-8, Office Type Furniture and Equipment.
- TA 20-11, Individual Safety and Protective Clothing and Equipment.
- TA 20-12, Allowances for Flags, Tentage, Sewing Machines, and Equipment for Civilian Guards.
- TA 20-90, Furniture and Furnishings for Government-Controlled Personnel Quarters.
- TA 20-92, Troop Information Activities, Army Education Center Activities.
- TA 21, Clothing and Equipment.
- TA 23, Targets and Target Equipment.
- TA 23-100, Ammunition for Training.
- TA 23-103, Dummy, Drill, and Inert Ammunition.

4. The abbreviations used herein are in accordance with AR 320-50, AR 611-201 and SR 605-105-5.

5. Items of equipment authorized herein are the latest adopted type articles. Priorities of issue and/or issue of substitute items pending availability of later models or in lieu thereof until exhausted, are established and authorized by current supply directives.

6. This table contains the minimum essential quantities and types of equipment necessary to accomplish the mission of the unit. When additional equipment is required and is not covered by pertinent equipment authorization documents, approval must be obtained in accordance with procedures established by SR 725-10-2.

7. Allowances of equipment authorized herein may be decreased or omitted at the direction of the commanders of major commands. When deemed appropriate by these commanders only major components of items authorized will be requisitioned or retained.

8. When assigned military personnel exceeds that authorized in Section II, items of equipment authorized on an individual basis are increased accordingly.

SECTION II - ORGANIZATION

INDEX		DESIGNATION	IDENTITY	BRANCH	MOE.	STRENGTH				OFFICERS							ENLISTED						REMARKS
PAR	LINE					FULL (1)	REDUCED (2)	CADRE (4)	TYPE "B" (5)	GEN	COL	LT COL	MAJ	CAPT	LT	WO	E-7	E-6	E-5	E-4	E-3	E-2	
1	2	3	4	5	6	7	8	9	10	11	12	13	14	15	16	17	18	19	20	21	22	23	24
			O TC		0606	1								1									
			O TC		0660	2						1	1										
			O TC		2110	1								1									
			O TC		2162	2								1	1								
			O TC		4010	1								1	1								
						8						1	2	5									
			WARRANT OFFICERS																				
			W		2200	1											1						
			W		4000	1											1						
						2											2						
			NON-COMMISSIONED OFFICERS																				
			E NC		00190	1											1			1			
			E NC		05360	1																	
			E NC		31170	1													1				
			E NC		62260	2													2				
			E NC		63270	1											1						
			E NC		64370	2											1						
			E NC		71670	1											1						
			E NC		76860	3													2		1		
			E NC		94160	1													1		1		
						13											3		6		2		
			OTHER ENLISTED																				
			E		05310	2															2		
			E		31000	5															1		4
			E		31110	2															1		
			E		63110	1															1		
			E		71000	10															2		
			E		71110	2															2		8
			E		71610	1															1		
			E		71620	1															1		
			E		76000	2															1		2
			E		76810	1															1		
			E		77310	1															1		
			E		94000	1															1		1
			E		94110	2															1		
			E		96220	1															1		1
						32															1	4	12
																					15		
			REDUCED STRENGTH																				
			OFFICERS																				
			O SC		0210		1																
			O TC		0606		1																
			O TC		0660		1					1											
			O TC		2110		1																
			O TC		2162		1							1									
			O TC		4010		1								1								
							6					1	1	4									
			WARRANT OFFICERS																				
			W		2200		1																
							1																
			NON-COMMISSIONED OFFICERS																				
			E NC		00190		1																

SECTION II - ORGANIZATION

INDEX		DESIGNATION	SECURITY	BRANCH	MOS.	STRENGTH				OFFICERS							ENLISTED						REFERENCE
PAR	LINE					FULL (1)	REDUCED (2)	CADRE (4)	TYPE "B" (5)	GEN	COL	LT COL	MAJ	CAPT	LT	WO	E-7	E-6	E-5	E-4	E-3	E-2	
1	2	3	4	5	6	7	8	9	10	11	12	13	14	15	16	17	18	19	20	21	22	23	24
		REMARKS																					
		ALL PERSONNEL ARMED WITH RIFLE 7.62-MM LT BBL UNLESS OTHERWISE INDICATED.																					
		01 ALSO LIGHT TRUCK DRIVER.																					
		11 ARMED WITH PISTOL CAL 45 SEMIAUTOMATIC.																					
		40 REMARK 11 APPLIES, ALSO S2.																					
		01 REMARK 11 APPLIES, ALSO DETACHMENT COMMANDER.																					
		42 ALSO DETACHMENT FIRST SERGEANT.																					
		45 1 EM ALSO RADIO TELEPHONE OPERATOR.																					
		46 ALSO RADIO TELEPHONE OPERATOR.																					
		45 REMARK 01 APPLIES TO 1 EM.																					
		46 REMARK 01 APPLIES AT REDUCED STRENGTH ONLY.																					

SECTION III - EQUIPMENT

TOE 55-160

PAR. NO.	LINE ITEM NUMBER	ITEM DESCRIPTION	QUANTITY			REMARKS	FOR LOCAL USE
			FULL STRENGTH	REDUCED STRENGTH	TYPE "B" STRENGTH		
1	2	3	4	5	6	7	8
		SRC 55 D46D 5 00-	1	2	5		
01		BATTALION HEADQUARTERS					
	601076	BAYONET-KNIFE W/SCABBARD CARBINE	7	6		600	
	629289	PISTOL CAL 045 SEMIAUTOMATIC	4	3			
	635965	RIFLE 7.62-MM SEMIAUTOMATIC LT BARREL	3	3			
02		DETACHMENT HEADQUARTERS					
	108170	DETECTOR KIT CHEMICAL AGENT	1	1		600	
	202275	AX SINGLE BIT 4 LB 35 IN LG	2	2		514	
	298165	GENERATOR SET GAS ENG AC 120 V 1 AND 3 PH 120-240 V 1 PH 120-208 V 3 PH 60 CY SKID MTD 8 KW	1	1		600	
	249076	LIGHT SET GEN ILLUM COND POST	3	3		600	
	251110	MATTOCK PICK W-HANDLE 5 LB	2	2		521	
	272400	SHOVEL HAND RD PT D-HDL	2	2		514	
	285850	TOOL KIT CAMP ENGR SQD	1	1			
	601076	BAYONET-KNIFE W/SCABBARD CARBINE	6	6		600	
	601351	CABINET STORAGE ASSEMBLY TOOL STEEL TYPE IV TOP OPENING	2	2			
	603457	CHAIN ASSEMBLY SGL LEG 5/8 IN X 1 1/2 FT	1	1		704	
	605097	OR	2	2		705	
	617125	GUN MACH 7.62-MM LIGHTWEIGHT GENERAL PURPOSE	2	2			
	620000	LAUNCHER ROCKET 3.5-INCH	2	2			
	625555	MOUNT TRIPOD MACHINE GUN 7.62-MM	2	2			
	635965	RIFLE 7.62-MM SEMIAUTOMATIC LT BARREL	6	6			
	653600	TOOL KIT GEN MECH	1	1		219	
	653695	TOOL KIT ORG MAINT NR 2 COMMON	1	1			
	653910	TOOL KIT ORG MAINT NR 2 SUPPLEMENTAL	1	1			
	657229	TRAILER CARGO 1 1/2-TON 2-WHEEL	1	1			
	657695	TRAILER TANK WATER 1 1/2-TON 2-WHEEL	1	1			
	660110	TRUCK CARGO 2 1/2-TON 6X6 LWB	2	2		597	
	665380	WATCH WRIST GRADE II	10	2		609	
	609149	ACCESSORY OUTFIT GASOLINE FIELD RANGE	1	1			
	602497	BAG WATER STERILIZING POROUS W/SUSPENSION ROPES AND COVER	1	1			
	610997	CAN ASH AND GARBAGE GALVANIZED NESTING W/COVER 10 GAL CAPACITY	2	2			
	611021	CAN ASH AND GARBAGE GALVANIZED NESTING W/COVER 32 GAL CAPACITY	5	5			
	611093	CAN GASOLINE MILITARY STEEL 5 GAL	7	7		516	
	611248	CAN WATER MILITARY STEEL 5 GAL	4	3			
	612676	BURNER OIL STOVE TENT	1	1		600	
	613493	CASE FLD OFF MACH 10 1/2 X 13 1/4 X 17 IN	1	1			
	614757	CHAIR FOLDING	2	2			
	617044	CLIP BOARD FILE W/ARM STRAP COMPOSITION BOARD BACKING 15 1/2 IN LG 9 IN W	1	1			
	617109	CLOCK ALARM MECHANICAL 4 IN DIAL	1	1			
	623789	DESK FIELD PLYWOOD 19 3/8 IN W 11 1/4 IN H 16 5/8 IN DP	1	1			
	634489	FLAG GUIDON BUNTING	1	1			
	634493	HEATER SPACE COAL OR OIL 45000 BTU 18 5/8 IN H	1	1		600	
	638000	GOGGLES M-1904	2	2		514	
	640029	LANTERN GASOLINE 1 1/2 PT CAPACITY	3	3			
	641649	HEATER IMMERSION FOR CAN CORRUGATED	3	3			
	641686	HEATER WATER IMMERSION GAS OPERATED	1	1		620	
	647055	KIT BARBER W/CASE	1	1			
	648189	PAIL METAL STEEL GALVANIZED 3 1/2 GAL CAPACITY LIGHTWEIGHT TYPE	2	2		621	
	648623	PANEL MARKER GROUND SIGNAL TO AIRCRAFT	4	2			
	653623	PERFORATOR PAPER DESK NONADJUSTABLE 2 PUNCHES 2 3/4 IN CYC	1	1			
	653717	RANGE OUTFIT FIELD GASOLINE M-1937	2	2			
	653637	OUTFIT OFFICERS MESS	2	2			
	663409	SCREEN LATRINE DUCK FMMHR OLIVE DRAB W/COVER	1	1		600	
	665596	SEALER STL STRAP HND DBL CRMP END JAW 5/8 IN W 0.010 TO 0.023 THK	1	1			
	667957	SPOUT CAN FLEXIBLE W/FILTER SCREEN 16 IN L 1.238 IN FLEX TUBE	4	6		526	
	670788	STRETCHR STL STR HND BK-GR TAKE-UP 3/4 IN W 0.023 IN THK STRAP	1	1			
	672046	TABLE FOLDING LEGS WOOD SOLID TOP WOOD LEGS 36 L 24 W 27 25-32 H	2	1			
	674397	TENT COMMAND POST COMP W/PINS AND POLES	1	1		600	
	675461	TENT KITCHEN FLYPROOF COMP W/PINS AND POLES	1	1		518	
	680065	STAPLER PAPER FASTEN OFF TYPE LT DUTY	1	1			
	680325	STENCIL OUTFIT COMP W/FIGURES AND LETTERS 1/2 IN AND 1 IN	1	1			
	686642	TYPEWRITER NON PTBL II IN CARRIAGE	1	1			
	609620	CHARGER RADIAC DETECTOR PP-1578/PD	2	2			
	610420	FLASHLIGHT Mx-991/U	23	12		800	
	630670	RADIACMETER IM-92/U/D	2	2			
	634675	RADIACMETER IM-108/PD	2	2			
	678260	TELEPHONE SET TA-312/P1	2	2			

SECTION III - EQUIPMENT

PAR. NO.	LINE ITEM NUMBER	ITEM DESCRIPTION	QUANTITY			REMARKS	FOR LOCAL USE
			FULL STRENGTH	REDUCED STRENGTH	TYPE "B" STRENGTH		
1	2	3	4	5	6	7	8
03		ADMINISTRATIVE AND PERSONNEL SECTION					
	202375	AX SINGLE BIT 4 LB 36 IN LG	3	3		514	
	251110	MATTOCK PICK W-HANDLE 5 LB	1	1		521	
	272400	SHOVEL HAND RD PT D-HDL	2	2		514	
	401076	BAYONET-KNIFE W/SCABBARD CARBINE	10	9		600	
	435965	RIFLE 7.62-MM SEMIAUTOMATIC LT BARREL	10	9			
	457110	TRAILER AMPHIBIOUS CARGO 1/4 TON 2-WHEEL	2	2			
	457190	TRAILER CARGO 3/4-TON 2-WHEEL	1	1			
	460050	TRUCK CARGO 3/4-TON 4X4	1	1			
	461790	TRUCK UTILITY 1/4-TON 4X4	2	2			
	511093	CAN GASOLINE MILITARY STEEL 5 GAL	7	7		516	
	512676	BURNER OIL STOVE TENT	2	2		600	
	513493	CASE FLD OFF MACH 18 1/2 X 13 1/4 X 17 IN	2	1			
	513509	CASE FLD OFF MACH 26 1/2 X 13 1/4 X 17 IN	1	1			
	514757	CHAIR FOLDING	4	4			
	517061	CLIP BOARD FILE W/ARM STRAP COMPOSITION BOARD BACKING 15 1/2 IN LG 9 IN W	5	5			
	523789	DESK FIELD PLYWOOD 19 3/8 IN W 11 1/4 IN H 14 5/8 IN DP	1	1			
	523797	DESK FIELD PLYWOOD 22 5/8 IN W 25 7/8 IN H 14 1/2 IN DP	4	4			
	526885	DUPLICATING MACH STENCIL HAND AUT FEED	1	1			
	534415	FLAG DISTINGUISHING SILK	1	1			
	534493	HEATER SPACE COAL OR OIL 45000 BTU 18 5/8 IN H	2	2		600	
	534572	FLAG MATL COLORS SILK	1	1			
	538886	GOGGLES M-1944	2	2		514	
	540029	LANTERN GASOLINE 1 1/2 PT CAPACITY	2	2			
	553623	PERFORATOR PAPER DESK NONADJUSTABLE 2 PUNCHES 2 3/4 IN CTC	1	1			
	562101	SAFE 26 IN H 17 IN W 17 1/2 IN DP	1	1			
	566301	SLING FLAGSTAFF WEBBING OLIVE DRAB SHADE NO 7	2	2			
	567957	SPOUT CAN FLEXIBLE W/FILTER SCREEN 16 IN L 1.238 IN FLEX TUBE	2	2			
	572046	TABLE FOLDING LEGS WOOD SOLID TOP WOOD LEGS 36 L 24 W 27 25-32 H	6	6		526	
	574397	TENT COMMAND POST COMP W/PINS AND POLES	1	1		600	
	574429	TENT GENERAL PURPOSE MEDIUM COMP W/PINS AND POLES	1	1		600	
	585966	STAPLER PAPER FASTEN OFF TYPE LT DUTY	2	2			
	596643	TYPEWRITER NON PTBL 11 IN CARRIAGE	2	1			
	596705	TYPEWRITER NON PTBL 18-19 IN CARRIAGE	1	1			
	650101	RADIO SET AN/VRC-3 MTD IN TRK 1/4 TON	1	1			
	678260	TELEPHONE SET TA-312/PT	4	4			
04		OPERATIONS SECTION					
	202375	AX SINGLE BIT 4 LB 36 IN LG	2	2		514	
	226900	DRAFT EQUIP SET BN CHARTS SKETCH AND OVERLAYS	1	1			
	251110	MATTOCK PICK W-HANDLE 5 LB	1	1		521	
	263650	REPROD SET GEL PROCESS 18 X 18 IN	1	1			
	272400	SHOVEL HAND RD PT D-HDL	2	2		514	
	401076	BAYONET-KNIFE W/SCABBARD CARBINE	9	6		600	
	435965	RIFLE 7.62-MM SEMIAUTOMATIC LT BARREL	9	6			
	457110	TRAILER AMPHIBIOUS CARGO 1/4 TON 2-WHEEL	1	1			
	457190	TRAILER CARGO 3/4-TON 2-WHEEL	1	1			
	460050	TRUCK CARGO 3/4-TON 4X4	1	1			
	461790	TRUCK UTILITY 1/4-TON 4X4	1	1			
	511093	CAN GASOLINE MILITARY STEEL 5 GAL	5	5		516	
	512676	BURNER OIL STOVE TENT	2	2		600	
	513493	CASE FLD OFF MACH 18 1/2 X 13 1/4 X 17 IN	1	1			
	514757	CHAIR FOLDING	5	4			
	517061	CLIP BOARD FILE W/ARM STRAP COMPOSITION BOARD BACKING 15 1/2 IN LG 9 IN W	3	3			
	534493	HEATER SPACE COAL OR OIL 45000 BTU 18 5/8 IN H	2	2		600	
	538886	GOGGLES M-1944	2	2		514	
	540029	LANTERN GASOLINE 1 1/2 PT CAPACITY	2	2			
	553613	PERFORATOR PAPER DESK ADJUSTABLE 3 PUNCH 1/4 IN DIA	2	2			
	553623	PERFORATOR PAPER DESK NONADJUSTABLE 2 PUNCHES 2 3/4 IN CTC	1	1			
	562013	RULER WOOD METAL EDGE SINGLE EDGE 18 IN LG	1	1			
	564933	SHEARS STRAIGHT TRIMMERS SOLID STEEL 4 5/8 IN CUTTING LG 9 IN LG	1	1			
	567957	SPOUT CAN FLEXIBLE W/FILTER SCREEN 16 IN L 1.238 IN FLEX TUBE	2	2		526	
	572046	TABLE FOLDING LEGS WOOD SOLID TOP WOOD LEGS 36 L 24 W 27 25-32 H	1	1			
	574429	TENT GENERAL PURPOSE MEDIUM COMP W/PINS AND POLES	6	5			
	596643	TYPEWRITER NON PTBL 11 IN CARRIAGE	1	1		600	
	650101	RADIO SET AN/VRC-3 MTD IN TRK 1/4 TON	1	1			
	678260	TELEPHONE SET TA-312/PT	2	2			

SECTION III - EQUIPMENT

TOE 55-16D

PAR. NO.	LINE ITEM NUMBER	ITEM DESCRIPTION	QUANTITY			REMARKS	FOR LOCAL USE
			FULL STRENGTH	REDUCED STRENGTH	TYPE "D" STRENGTH		
1	2	3	4	5	6	7	8
05		MAINTENANCE SECTION					
	202375	AX SINGLE BIT 4 LB 36 IN LG	1	1		514	
	251110	MATTOCK PICK W-HANDLE 5 LB	1	1		521	
	272400	SHOVEL HAND RD PT D-HDL	1	1		514	
	401076	BAYONET-KNIFE W/SCABBARD CARBINE	5	4		600	
	435965	RIFLE 7.62-MM SEMIAUTOMATIC LT BARREL	5	4			
	460050	TRUCK CARGO 3/4-TON 4X4	1	1			
	511093	CAN GASOLINE MILITARY STEEL 5 GAL	2	2		516	
	513493	CASE FLD OFF MACH 18 1/2 X 13 1/4 X 17 IN	1	1			
	514757	CHAIR FOLDING	1	1			
	517061	CLIP BOARD FILE W/ARM STRAP COMPOSITION BOARD BACKING 15 1/2 IN LG 9 IN W	1	1			
	538886	GOGGLES M-1944	1	1		514	
	553623	PERFORATOR PAPER DESK NONADJUSTABLE 2 PUNCHES 2 3/4 IN CTOC	1	1			
	567957	SPOUT CAN FLEXIBLE W/FILTER SCREEN 16 IN L 1.238 IN FLEX TUBE	1	1		526	
	568725	STAPLER PAPER FASTENER OFFICE DESK STYLE HEAVY DUTY	1	1			
	572046	TABLE FOLDING LEGS WOOD SOLID TOP WOOD LEGS 36 L 24 W 27 25-32 H	2	2			
	596643	TYPEWRITER NON PTBL II IN CARRIAGE	1	1			
	678260	TELEPHONE SET TA-312/PT	1	1			
06		SUPPLY SECTION					
	202375	AX SINGLE BIT 4 LB 36 IN LG	2	2		514	
	251110	MATTOCK PICK W-HANDLE 5 LB	2	2		521	
	272400	SHOVEL HAND RD PT D-HDL	2	2		514	
	401076	BAYONET-KNIFE W/SCABBARD CARBINE	7	6		600	
	435965	RIFLE 7.62-MM SEMIAUTOMATIC LT BARREL	7	4			
	457190	TRAILER CARGO 3/4-TON 2-WHEEL	2	2			
	460050	TRUCK CARGO 3/4-TON 4X4	2	2			
	511093	CAN GASOLINE MILITARY STEEL 5 GAL	6	6		516	
	512676	BURNER OIL STOVE TENT	2	2		600	
	513493	CASE FLD OFF MACH 18 1/2 X 13 1/4 X 17 IN	2	2			
	514757	CHAIR FOLDING	5	3			
	517061	CLIP BOARD FILE W/ARM STRAP COMPOSITION BOARD BACKING 15 1/2 IN LG 9 IN W	2	2			
	534493	HEATER SPACE COAL OR OIL 45000 BTU 18 5/8 IN H	2	2		600	
	538886	GOGGLES M-1944	2	2		514	
	540029	LANTERN GASOLINE 1 1/2 PT CAPACITY	2	2			
	553623	PERFORATOR PAPER DESK NONADJUSTABLE 2 PUNCHES 2 3/4 IN CTOC	1	1			
	567957	SPOUT CAN FLEXIBLE W/FILTER SCREEN 16 IN L 1.238 IN FLEX TUBE	2	2		526	
	572046	TABLE FOLDING LEGS WOOD SOLID TOP WOOD LEGS 36 L 24 W 27 25-32 H	7	5			
	574429	TENT GENERAL PURPOSE MEDIUM COMP W/PINS AND POLES	1	1		600	
	585965	STAPLER PAPER FASTEN OFF TYPE LT DUTY	1	1			
	596643	TYPEWRITER NON PTBL II IN CARRIAGE	2	2			
	678260	TELEPHONE SET TA-312/PT	1	1			
07		COMMUNICATIONS SECTION					
	202375	AX SINGLE BIT 4 LB 36 IN LG	2	2		514	
	235152	GENERATOR SET GAS ENG DC 28 V SKID MTD 1.5 KW	1	1			
	251110	MATTOCK PICK W-HANDLE 5 LB	1	1		521	
	272400	SHOVEL HAND RD PT D-HDL	2	2		514	
	401076	BAYONET-KNIFE W/SCABBARD CARBINE	11	9		600	
	414940	GAUGE CLIMBERS STEEL 2 1/8 IN WIDE 1 LEG 1 1/16 IN LONG 1 LEG 5/8 IN LONG 3 IN OPNG 3 REFERENCE LINE MARKINGS	1	1			
	435965	RIFLE 7.62-MM SEMIAUTOMATIC LT BARREL	11	9			
	457110	TRAILER AMPHIBIOUS CARGO 1/4 TON 2-WHEEL	1	1			
	457190	TRAILER CARGO 3/4-TON 2-WHEEL	1	1			
	460050	TRUCK CARGO 3/4-TON 4X4	1	1			
	461790	TRUCK UTILITY 1/4-TON 4X4	1	1			
	511093	CAN GASOLINE MILITARY STEEL 5 GAL	5	5		516	
	512676	BURNER OIL STOVE TENT	1	1		600	
	514757	CHAIR FOLDING	2	2			
	522488	CLOCK MESSAGE CENTER	1	1			
	534493	HEATER SPACE COAL OR OIL 45000 BTU 18 5/8 IN H	1	1		600	
	538886	GOGGLES M-1944	2	2		514	
	540029	LANTERN GASOLINE 1 1/2 PT CAPACITY	1	1			
	553623	PERFORATOR PAPER DESK NONADJUSTABLE 2 PUNCHES 2 3/4 IN CTOC	1	1			
1	2	3	4	5	6	7	8

SECTION III - EQUIPMENT

PAR. NO.	LINE ITEM NUMBER	ITEM DESCRIPTION	QUANTITY			REMARKS	FOR LOCAL USE
			FULL STRENGTH	REDUCED STRENGTH	TYPE "B" STRENGTH		
1	2	3	4	5	6	7	8
07	567957	SPOUT CAN FLEXIBLE W/FILTER SCREEN 16 IN L 1-238 IN FLEX TUBE	3	3		926	
	572046	TABLE FOLDING LEGS WOOD SOLID TOP WOOD LEGS 36 L 24 W 27 25-32 H	2	2			
	574397	TENT COMMAND POST COMP W/PINS AND POLES	1	1		600	
	603218	ANTENNA EQUIPMENT AN/GRA-4	1	1			
	609670	CHEST BC-5	1	1			
	610280	CIPHER MACHINE TSEC/KL-7	1	1			
	628193	MULTIMETER ME-77/U	1	1			
	650101	RADIO SET AN/VRC-3 MTD IN TRK 1/4 TON	2	2		236	
	657222	RADIO TELETYPEWRITER SET AN/GRC-46	1	1			
	660040	REEL EQUIPMENT CE-11	1	1		548	
	663895	SHUNT INSTRUMENT MULTIRANGE MK-1471/U	1	1			
	672580	SWITCHBOARD TELEPHONE MANUAL SB-22/PT	1	1			
	678260	TELEPHONE SET TA-312/PT	1	1			
	682715	TERMINAL TELEGRAPH-TELEPHONE AN/TCC-14	2	2			
	685665	TEST SET ELECTRON TUBE TV-7/U	1	1			
	688520	TOOL EQUIPMENT TE-33	1	1			
	688600	TOOL EQUIPMENT TE-41	2	2		911	
	698400	WIRE WD-1/TY ON WIRE REEL RL-159/U MI	2	2		238	
	698535	WIRE SPLICING KIT MK-356/G	2	2			
		RECAPITULATION					
		CHEMICAL ITEMS					
	108170	DETECTOR KIT CHEMICAL AGENT	1	1			
		ENGINEER ITEMS					
	202375	AK SINGLE BIT 4 LB 36 IN LG	12	12			
	226900	DRAFT EQUIP SET BN CHARTS SKETCH AND OVERLAYS	1	1			
	235152	GENERATOR SET GAS ENG DC 28 V SKID MTD 1.5 KW	1	1			
	235165	GENERATOR SET GAS ENG AC 120 V 1 AND 2 PH 120-240 V 1 PH 120-208 V 3 PH 60 CY SKID MTD 5 KW	1	1			
	249076	LIGHT SET GEN ILLUM COMD POST	1	1			
	251110	MATTOCK PICK W-HANDLE 5 LB	2	2			
	263650	REPROD SET GEL PROCESS 18 X 18 IN	8	8			
	272400	SHOVEL HAND RD PT D-HDL	1	1			
	285850	TOOL KIT CARP ENGR SQD	12	12			
		ORDNANCE ITEMS					
	401076	BAYONET-KNIFE W/SCABBARD CARBINE	55	44			
	401851	CABINET STORAGE ASSEMBLY TOOL STEEL TYPE IV TOP OPENING	2	2			
	405457	CHAIN ASSEMBLY SGL LEG 5/8 IN X 16 FT	1	1			
	405457		OR	2			
	418840	GAUGE CLIMBERS STEEL 2 1/8 IN WIDE 1 LEG 1 1/16 IN LONG 1 LEG 5/8 IN LONG 3 IN OPNG 3 REFERENCE LINE MARKINGS	1	1			
	417125	GUN MACH 7.62-MM LIGHTWEIGHT GENERAL PURPOSE	1	1			
	420800	LAUNCHER ROCKET 3-5-INCH	2	2			
	425565	MOUNT TRIPGE MACHINE GUN 7.62-MM	2	2			
	425280	PISTOL CAL .45 SEMIAUTOMATIC	2	2			
	425565	RIFLE 7.62-MM SEMIAUTOMATIC LT BARREL	4	2			
	452800	TOOL KIT GEN MECH	51	41			
	452895	TOOL KIT ORG MAINT NR 2 COMMON	2	2			
	452910	TOOL KIT ORG MAINT NR 2 SUPPLEMENTAL	1	1			
	457110	TRAILER AMPHIBIOUS CARGO 1/4 TON 2-WHEEL	1	1			
	457190	TRAILER CARGO 3/4-TON 2-WHEEL	5	5			
	457220	TRAILER CARGO 1 1/2-TON 2-WHEEL	1	1			
	457495	TRAILER TANK WATER 1 1/2-TON 2-WHEEL	1	1			
	460050	TRUCK CARGO 3/4-TON 4X4	1	1			
	460110	TRUCK CARGO 2 1/2-TON 6X6 LWB	2	2			
	461790	TRUCK UTILITY 1/4-TON 4X4	4	4			
	465580	WATCH WRIST GRADE II	18	5			
		QUARTERMASTER ITEMS					
	500149	ACCESSORY OUTFIT GASOLINE FIELD RANGE	1	1			
	502427	BAG WATER STERILIZING POROUS W/SUSPENSION ROPES AND COVER	1	1			
	510997	CAN ASH AND GARBAGE GALVANIZED NESTING W/COVER 10 GAL CAPACITY	2	2			
	511021	CAN ASH AND GARBAGE GALVANIZED NESTING W/COVER 32 GAL CAPACITY	5	5			
	511093	CAN GASOLINE MILITARY STEEL 5 GAL	32	32			
	511245	CAN WATER MILITARY STEEL 5 GAL	4	4			
	512676	BURNER OIL STOVE TENT	4	4			
	513493	CASE FLD OFF MACH 18 1/2 X 13 1/4 X 17 IN	9	9			
	513509	CASE FLD OFF MACH 26 1/2 X 13 1/4 X 17 IN	7	7			
	514757	CHAIR FOLDING	1	1			
	517061	CLIP BOARD FILE W/ARM STRAP COMPOSITION BOARD BACKING 15 1/2 IN LG 9 IN W	19	16			
			12	12			
1	2	3	4	5	6	7	8

SECTION III - EQUIPMENT

TOE 55-46D

PAR. NO.	LINE ITEM NUMBER	ITEM DESCRIPTION	QUANTITY			REMARKS	FOR LOCAL USE
			FULL STRENGTH	REDUCED STRENGTH	TYPE "B" STRENGTH		
1	2	3	4	5	6	7	8
	517109	CLOCK ALARM MECHANICAL 4 IN DIAL	1	1			
	522488	CLOCK MESSAGE CENTER	1	1			
	523789	DESK FIELD PLYWOOD 19 3/8 IN W 11 1/4 IN H 14 5/8 IN DP	2	2			
	522977	DESK FIELD PLYWOOD 22 5/8 IN W 25 7/8 IN H 14 1/2 IN DP	4	4			
	526485	DUPLICATING MACH STENCIL HAND AUT FEED	1	1			
	534435	FLAG DISTINGUISHING SILK	1	1			
	534489	FLAG GUIDON BUNTING	1	1			
	534493	HEATER SPACE COAL OR OIL 45000 BTU 18 5/8 IN H	9	9			
	534572	FLAG NATL COLORS SILK	1	1			
	538886	GOGGLES M-1944	12	12			
	540027	LANTERN GASOLINE 1 1/2 PT CAPACITY	11	11			
	541445	HEATER IMMERSION FOR CAN CORRUGATED	3	3			
	541686	HEATER WATER IMMERSION GAS OPERATED	1	1			
	547055	KIT BARBER W/CASE	1	1			
	548189	PAIL METAL STEEL GALVANIZED 3 1/2 GAL CAPACITY LIGHTWEIGHT TYPE	2	2			
	548893	PANEL MARKER GROUND SIGNAL TO AIRCRAFT	4	2			
	553613	PERFORATOR PAPER DESK ADJUSTABLE 3 PUNCH 1/4 IN DIA	1	1			
	553823	PERFORATOR PAPER DESK NONADJUSTABLE 2 PUNCHES 2 3/4 IN CTC	6	6			
	558737	RANGE OUTFIT FIELD GASOLINE M-1937	2	2			
	559637	OUTFIT OFFICERS MESS	1	1			
	562013	RULER WOOD METAL EDGE SINGLE EDGE 18 IN LG	1	1			
	562101	SAFE 26 IN H 17 IN W 17 1/2 IN DP	1	1			
	563405	SCREEN LATRINE DUCK FWHMR OLIVE DRAB W/COVER	1	1			
	563596	SEALER STL STRAP HND DBL CRMP END JAW 5/8 IN W 0.010 TO 0.025 THK	1	1			
	564933	SHEARS STRAIGHT TRIMMERS SOLID STEEL 4 5/8 IN CUTTING LG 9 IN LG	1	1			
	566301	SLING FLAGSTAFF WEBBING OLIVE DRAB SHADE NO 7	2	2			
	567937	SPOUT CAN FLEXIBLE W/FILTER SCREEN 16 IN L 1.238 IN FLEX TUBE	17	17			
	568725	STAPLER PAPER FASTENER OFFICE DESK STYLE HEAVY DUTY	2	2			
	570788	STRETCHR STL STR HND RK-GR TAKE-UP 3/4 IN W 0.023 IN THK STRAP	1	1			
	572044	TABLE FOLDING LEGS WOOD SOLID TOP WOOD LEGS 26 L 24 W 27 25-32 H	25	21			
	574397	TENT COMMAND POST COMP W/PINS AND POLES	3	3			
	574429	TENT GENERAL PURPOSE MEDIUM COMP W/PINS AND POLES	3	3			
	576461	TENT KITCHEN FLYPROOF COMP W/PINS AND POLES	1	1			
	583966	STAPLER PAPER FASTEN OFF TYPE LT DUTY	4	4			
	586325	STENCIL OUTFIT COMP W/FIGURES AND LETTERS 1/2 IN AND 1 IN	1	1			
	596643	TYPEWRITER NON PTBL II IN CARRIAGE	7	6			
	596703	TYPEWRITER NON PTBL 18-19 IN CARRIAGE	1	1			
		SIGNAL ITEMS					
	602218	ANTENNA EQUIPMENT AN/GRA-4	1	1			
	609623	CHARGER RADIAC DETECTOR PP-1578/PD	2	2			
	609670	CHEST BC-5	1	1			
	610280	CIPHER MACHINE TSEC/KL-7	1	1			
	616420	FLASHLIGHT MX-991/U	23	12			
	628193	MULTIMETER ME-77/U	2	1			
	634670	RADIACMETER IM-93/UD	2	2			
	634675	RADIACMETER IM-108/PD	2	2			
	650101	RADIO SET AN/VRC-3 MTD IN TRK 1/4 TON	2	3			
	657222	RADIO TELETYPEWRITER SET AN/GRC-66	1	1			
	660060	REEL EQUIPMENT CE-11	1	1			
	662395	SHUNT INSTRUMENT MULTIRANGE MX-1471/U	1	1			
	672380	SWITCHBOARD TELEPHONE MANUAL SB-22/P7	1	1			
	678260	TELEPHONE SET TA-312/P7	12	12			
	681715	TERMINAL TELEGRAPH-TELEPHONE AN/TCC-14	1	1			
	682665	TEST SET ELECTRON TUBE TV-7/U	1	1			
	683329	TOOL EQUIPMENT TE-33	3	2			
	688600	TOOL EQUIPMENT TE-44	2	1			
	692600	WIRE WD-177 ON WIRE REEL RL-139/U MI	2	2			
	692335	WIRE SPLICING KIT MK-256/G	2	1			
		REMARKS					
	219	1 PER WHEEL VEH MECH.					
	236	1 PER WIREMAN.					
	238	1 PER SR RADIO MECHANIC, RADIO MECHANIC.					
	314	1 PER TRK.					
	316	1 PER ACCESSORY OUTFIT GAS, BURNER OIL STOVE, GENR GASOLINE, TRK 1/4 TON - 2 PER TRK 3/4 TON, TRK 2 1/2 TON.					
	321	1 PER TRK OVER 1/4 TON.					
	326	1 PER ACCESSORY OUTFIT GAS, GENR GASOLINE, TRK - 1 ADD PER 5 FCMV OR MFCV.					
	327	1 EQP W/KIT A FRAME.					
	348	MTD IN TRK 3/4 TON.					
	600	WAB CONARC ARADCON OR TOC.					
	609	M81 TO ANY OF THE FOL PERS AS RGR - OFF UP TO 50 PERCENT OFF STR. MCO E-7 AND E-6 WAB TOC.					

AG 320.3 (11 Aug 58)

By Order of Wilber M. Brucker, Secretary of the Army:

OFFICIAL:

R. V. LEE,
Major General, United States Army,
The Adjutant General.

MAXWELL D. TAYLOR,
General, United States Army,
Chief of Staff.

Distribution:

Active Army:

Gen Staff, DA (5) except
DCSLOG (3)
CNGB (2)
CUSAROTC (2)
CofCh (2)
CMH (1)
Tec Svc, DA (5) except
CSigO (21), CofT (25)
Admin & Tec Svc Bd (2)
Hq USCONARC (40)
OS Maj Comd (5)
OS Base Comd (5)
Log Comd (3)
Armies (25)
Corps (10)
Div (8)

Instl (3)
Gen & Br Svc Sch (20)
Ord Ing Comd (1)
PMST ROTC Units (1)
Trans Terminal Comd (2)
OS Sup Agencies (2)
Mil Dist (3)
MAAG (5)
Mil Mis (5)
Units org under fol TOE:
55-46D, Hq and Hq Det, Trans
Tactical Carr Bn (4)

NG: State AG (5).

USAR: Same as Active Army.

For distribution of abbreviations used, see AR 320-50.

