

CHARM by Gertie PATTERNS

STANWYCK BODICE AND COLLAR

Sizes 2-20
with cup sizes A-H

5/8 inch (1.5 cm) seam allowances are included on all pattern pieces.

PAGE 1 OF 2

PATTERN PIECE INDEX

- 1 Bodice Front, A Cup
- 1 Bodice Front, B/C Cup
- 2 Bodice Back
- 3 Collar
- 4 Collar Facing Front
- 5 Collar Facing Back

SIZE 2-20
PATTERN
SIZE KEY

- 2
- 4
- 6
- 8
- 10
- 12
- 14
- 16
- 18
- 20

SYMBOL
KEY

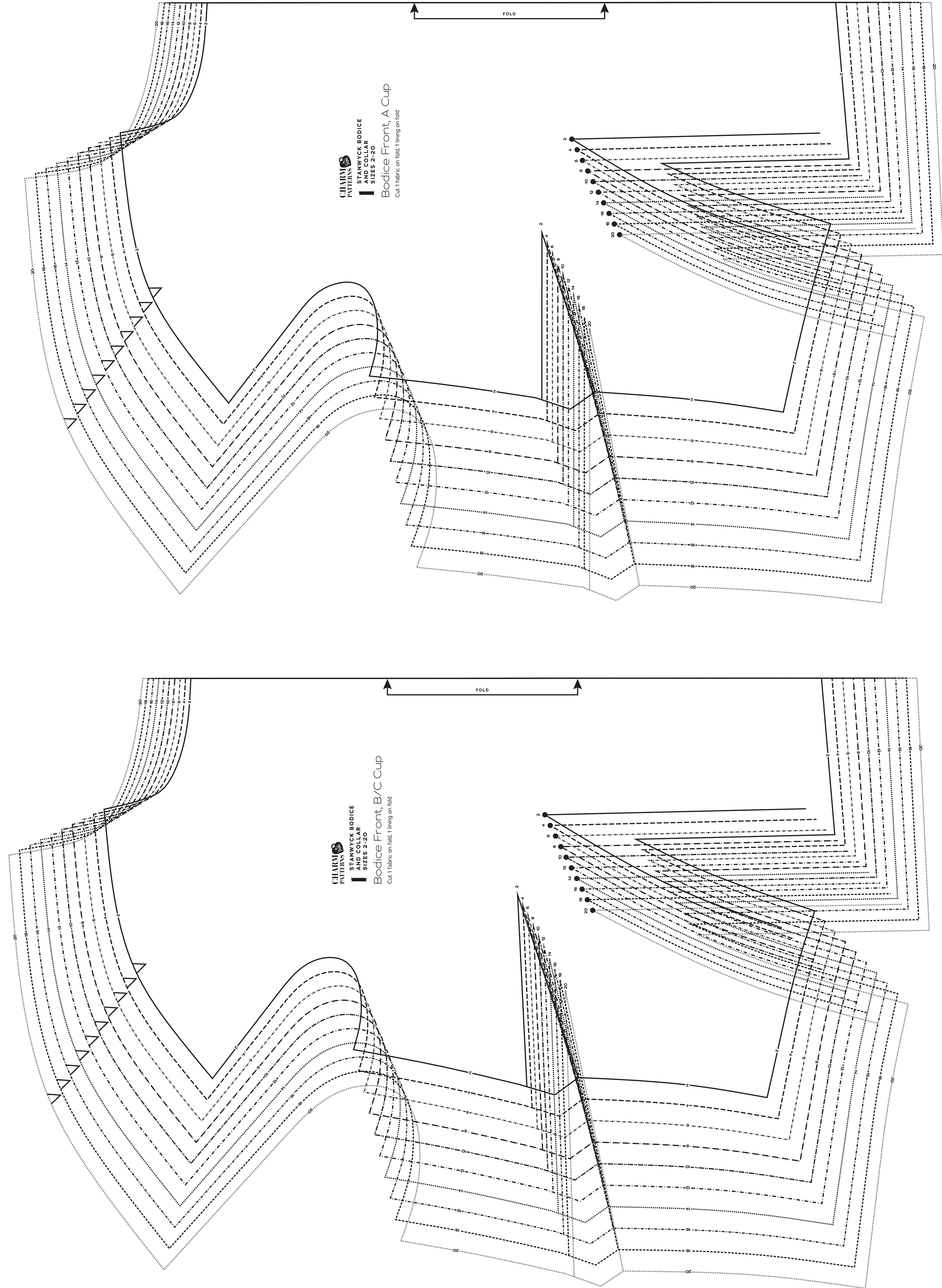
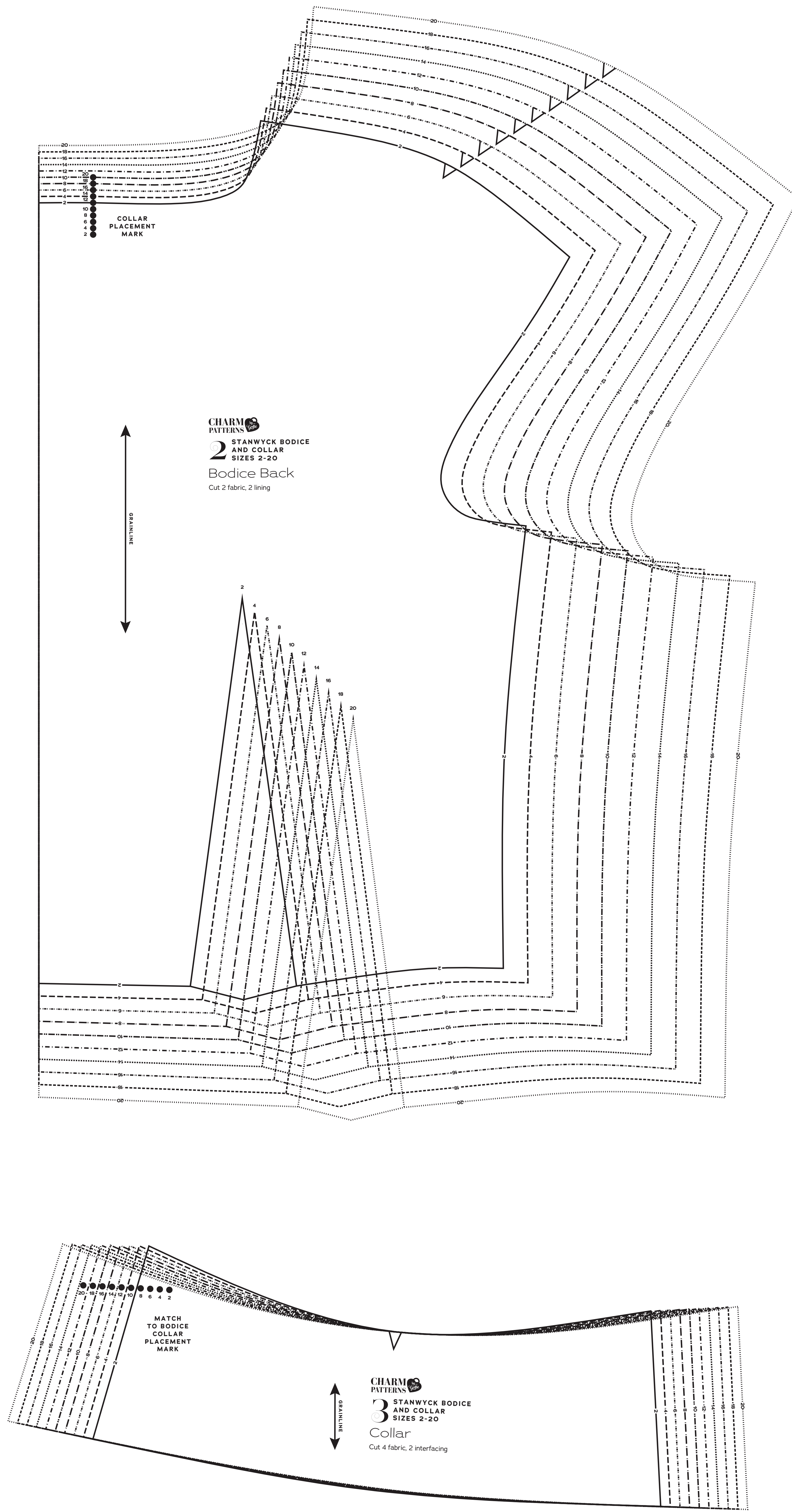
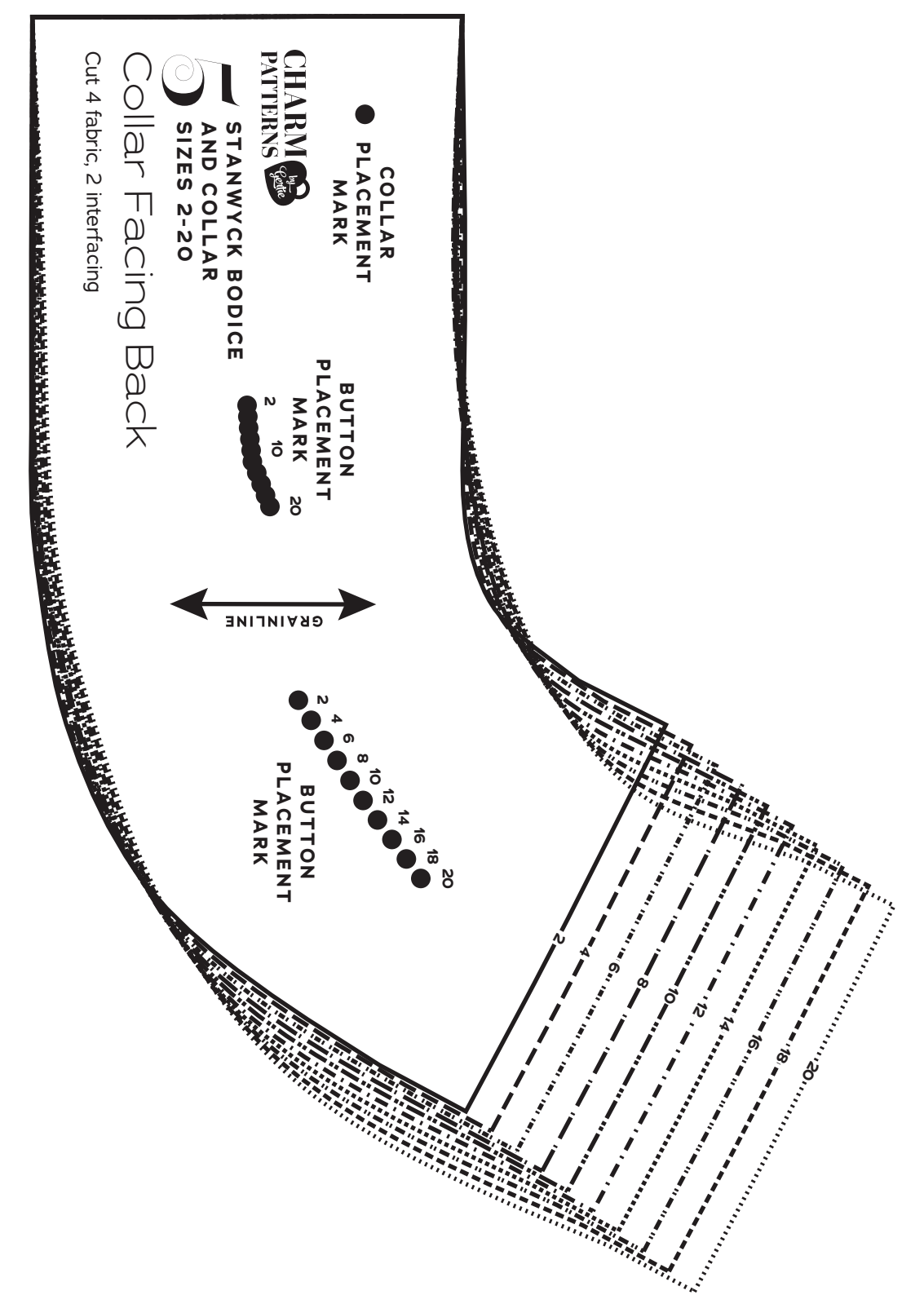
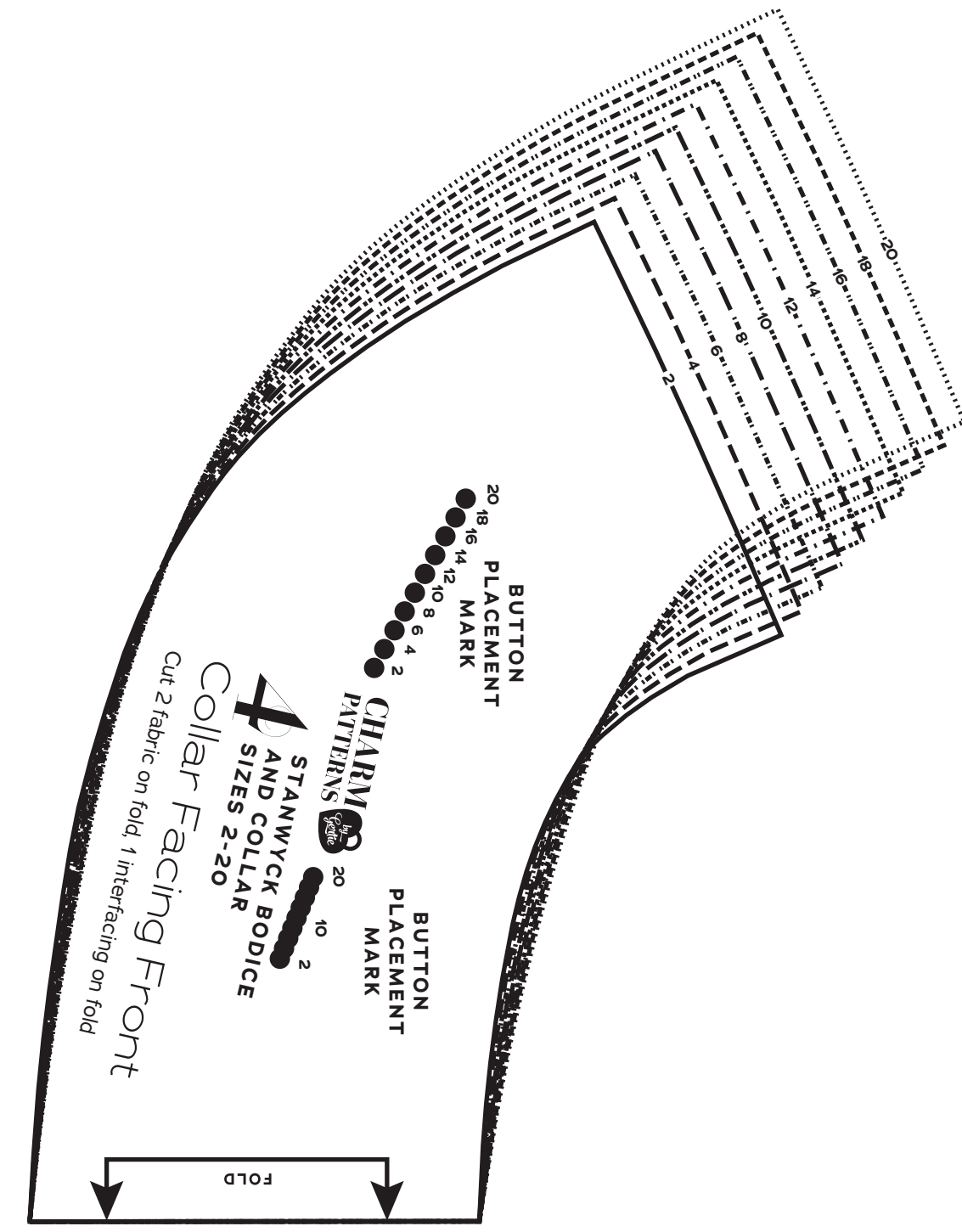
grainline arrow

match point/
placement mark

1 in
test
square

2 cm
test
square

© 2020 Charm
Patterns by Gertie
Distribution and
Commercial Use
Prohibited



CHARM PATTERNS



STANWYCK BODICE AND COLLAR

Sizes 2-20
with cup sizes A-H

5/8 inch (1.5 cm) seam allowances are included on all pattern pieces.

PAGE 2 OF 2

PATTERN PIECE INDEX
1 Bodice Front, D/DD Cup
1 Bodice Front, F/G Cup
1 Bodice Front, H Cup

SIZE 2-20 PATTERN SIZE KEY

2
4
6
8
10
12
14
16
18
20

SYMBOL KEY

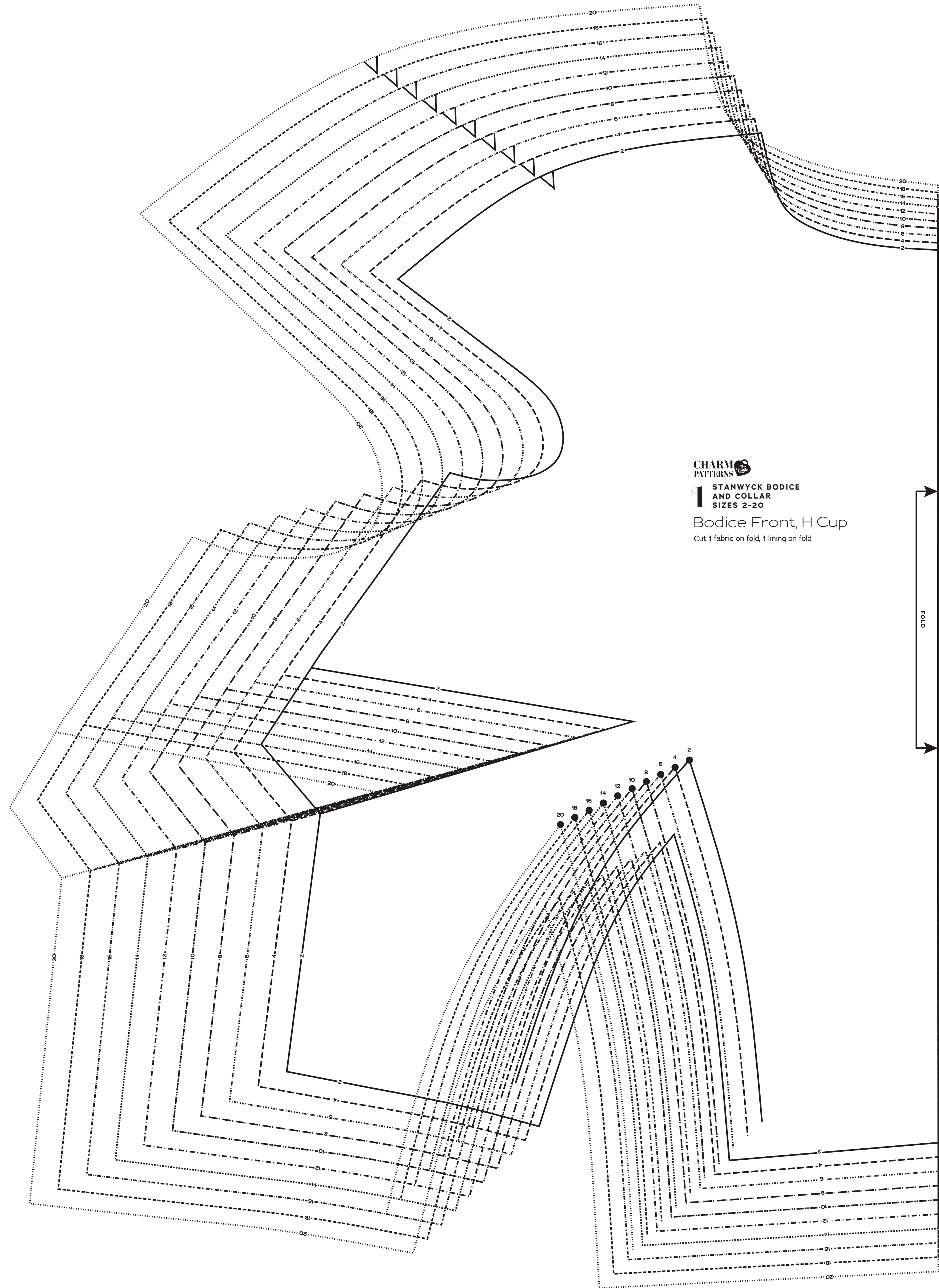
grainline arrow

match point/
placement mark

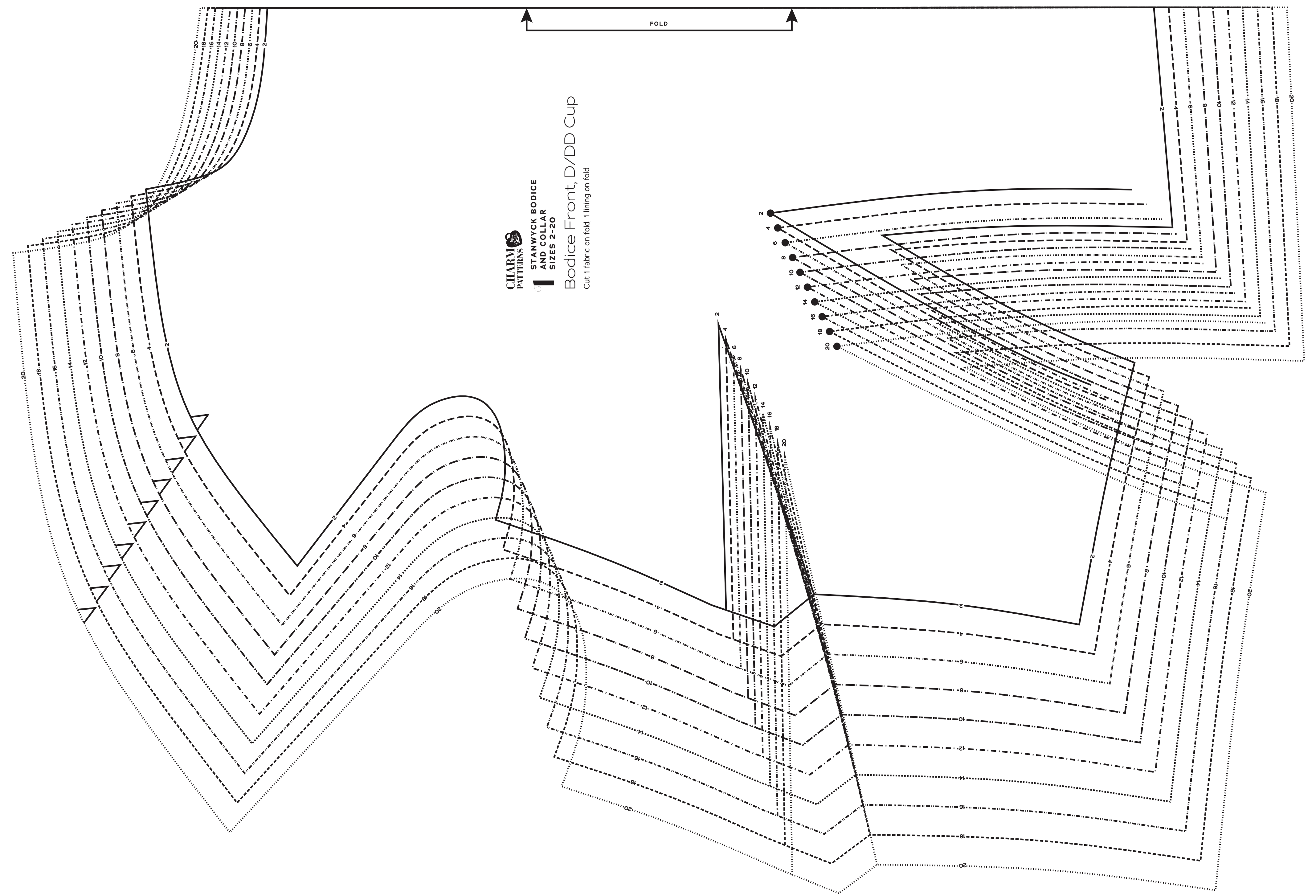
1 in
test
square

2 cm
test
square

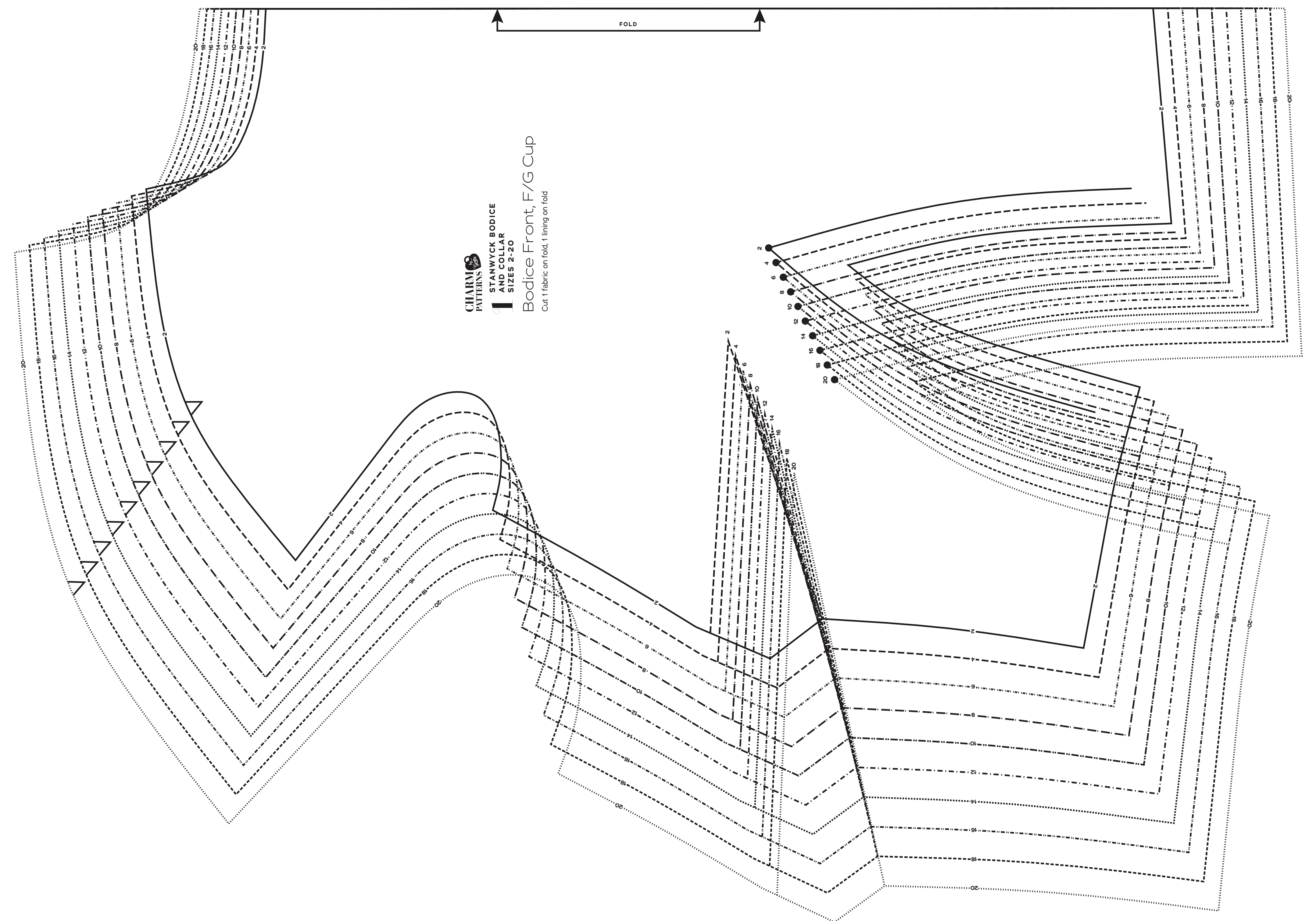
© 2020 Charm Patterns by Gertie Distribution and Commercial Use Prohibited



CHARM PATTERNS
STANWYCK BODICE AND COLLAR
SIZES 2-20
Bodice Front, H Cup
Cut: 1 fabric on fold, 1 lining on fold



CHARM PATTERNS
STANWYCK BODICE AND COLLAR
SIZES 2-20
Bodice Front, D/DD Cup
Cut: 1 fabric on fold, 1 lining on fold



CHARM PATTERNS
STANWYCK BODICE AND COLLAR
SIZES 2-20
Bodice Front, F/G Cup
Cut: 1 fabric on fold, 1 lining on fold