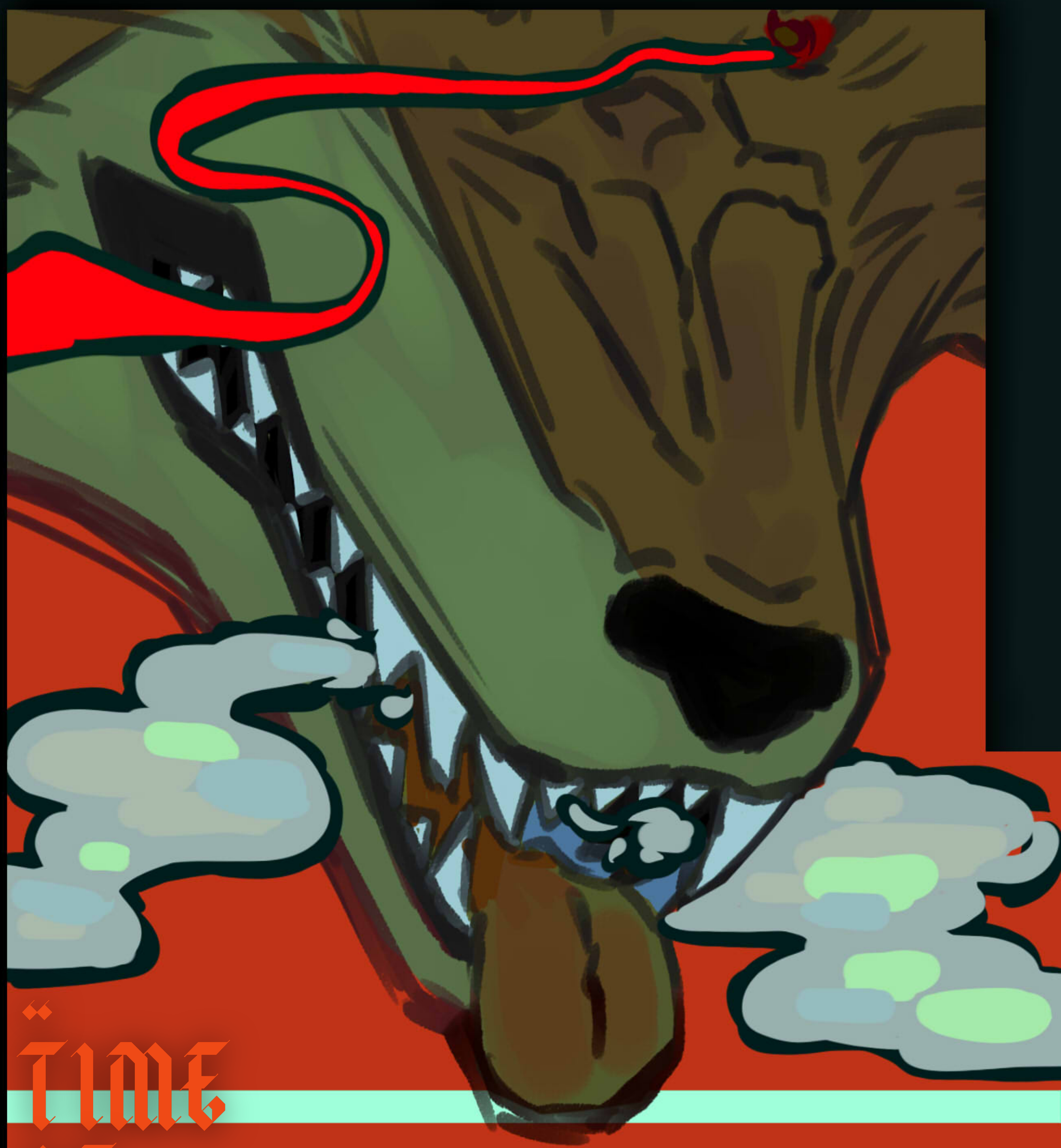
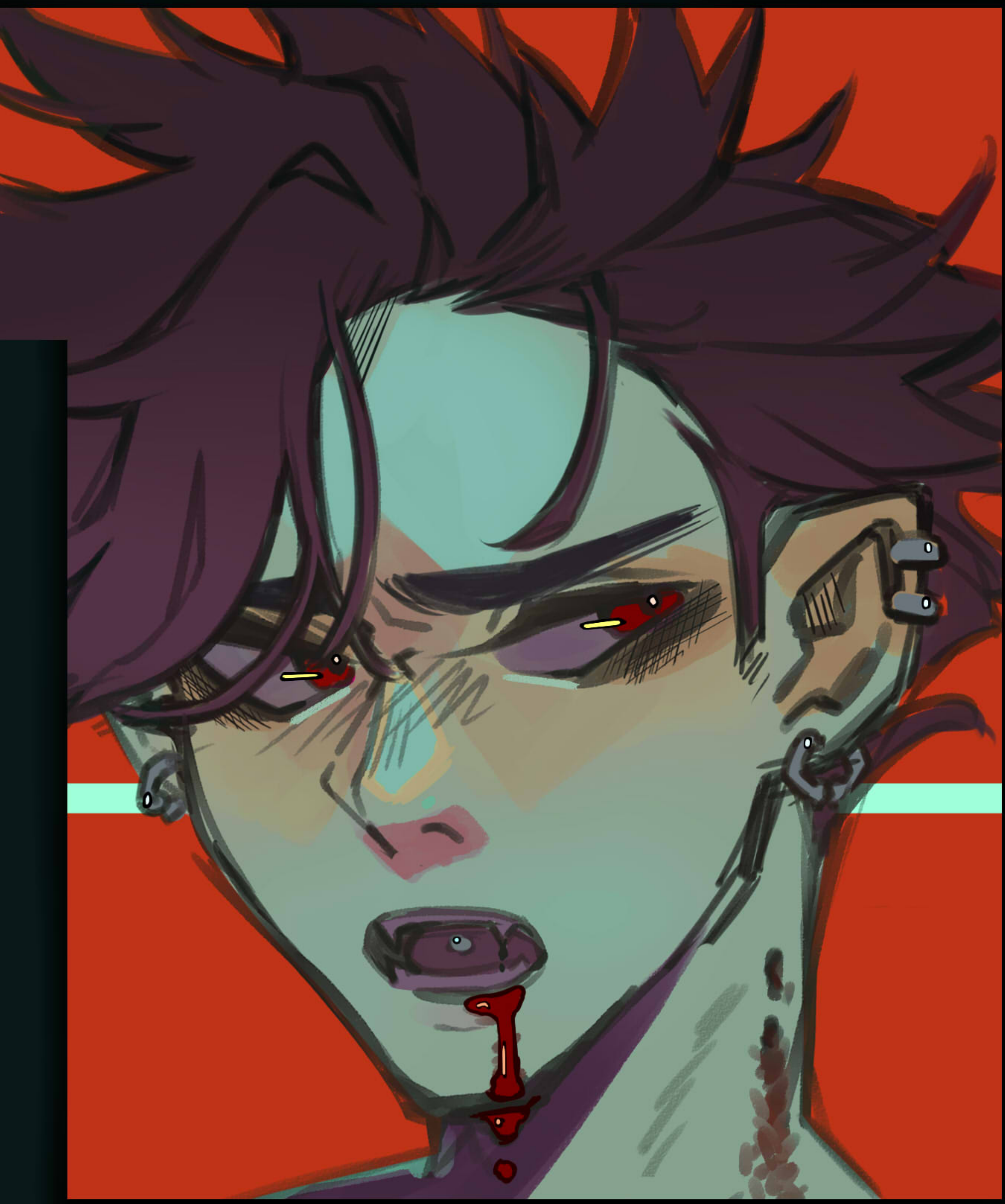


TW // CONSENSUAL MONSTERFUCKING  
. SIZE DIFFERENCE . KNOTTING

R18



◆  
TIME  
OF  
THE  
MOUTH  
◆  
VOL 1

VAMPIRE!SHINSOU X  
WEREWOLF!BAKUGOU  
DOUJINSHI



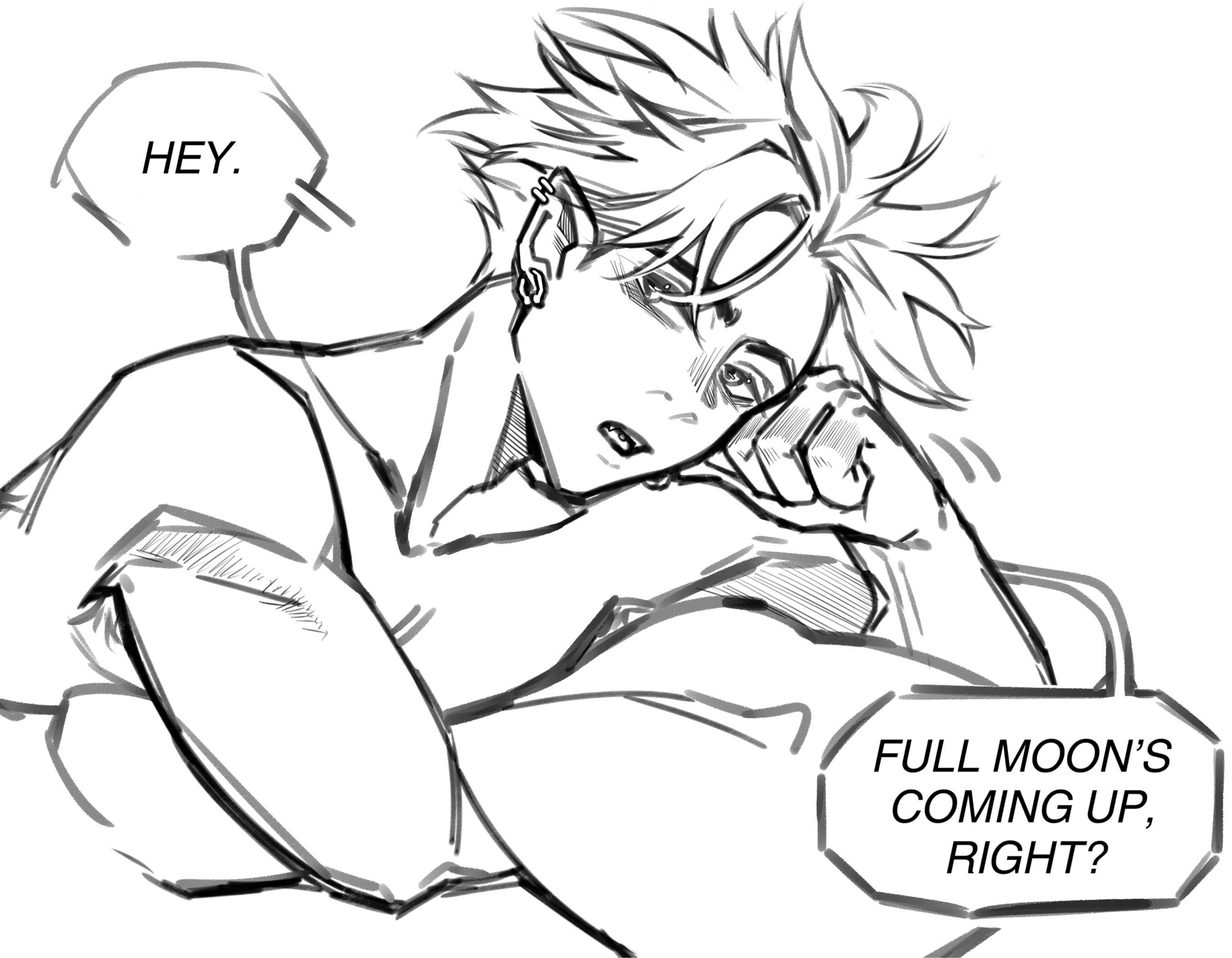
hello!

thank you for reading this comic! please heed the warnings on the cover because i dont want anyone reading this and getting triggered D:

this is just part 1 of the story, and id really like to continue it! i'll obviously finish the rest of the smut, and im entertaining the idea of a reverse where shinsou is feeding and tops bakugou and maybe eats him a little lmao

maybe i'll make a ko-fi goal? i honestly dk if this comic is gonna do well lol





*HEY.*

*FULL MOON'S  
COMING UP,  
RIGHT?*





*YEAH,  
AND?*





WELL THE HOST  
CANCELLED...

WHAT??



WHAT THE FUCK  
WHAT ARE YOU  
GONNA DO  
WHAT THE  
FUCK—

WHAT IF YOU  
STAYED HERE  
INSTEAD DURING  
FULL MOON?

OKAY—  
HEY—  
WAIT—







*I MEAN—I GUESS??  
BUT WHAT ABOUT  
WHEN I TURN?*

*I DON'T WANNA  
WRECK YOUR  
STUPID HOUSE*



*WELL—I HAVE A  
SPARE MUZZLE*

*AND...*





A-AND...

I CAN HELP  
WITH YOU  
YOUR RUT...





*WHAT... YOU'LL  
BOTTOM?*

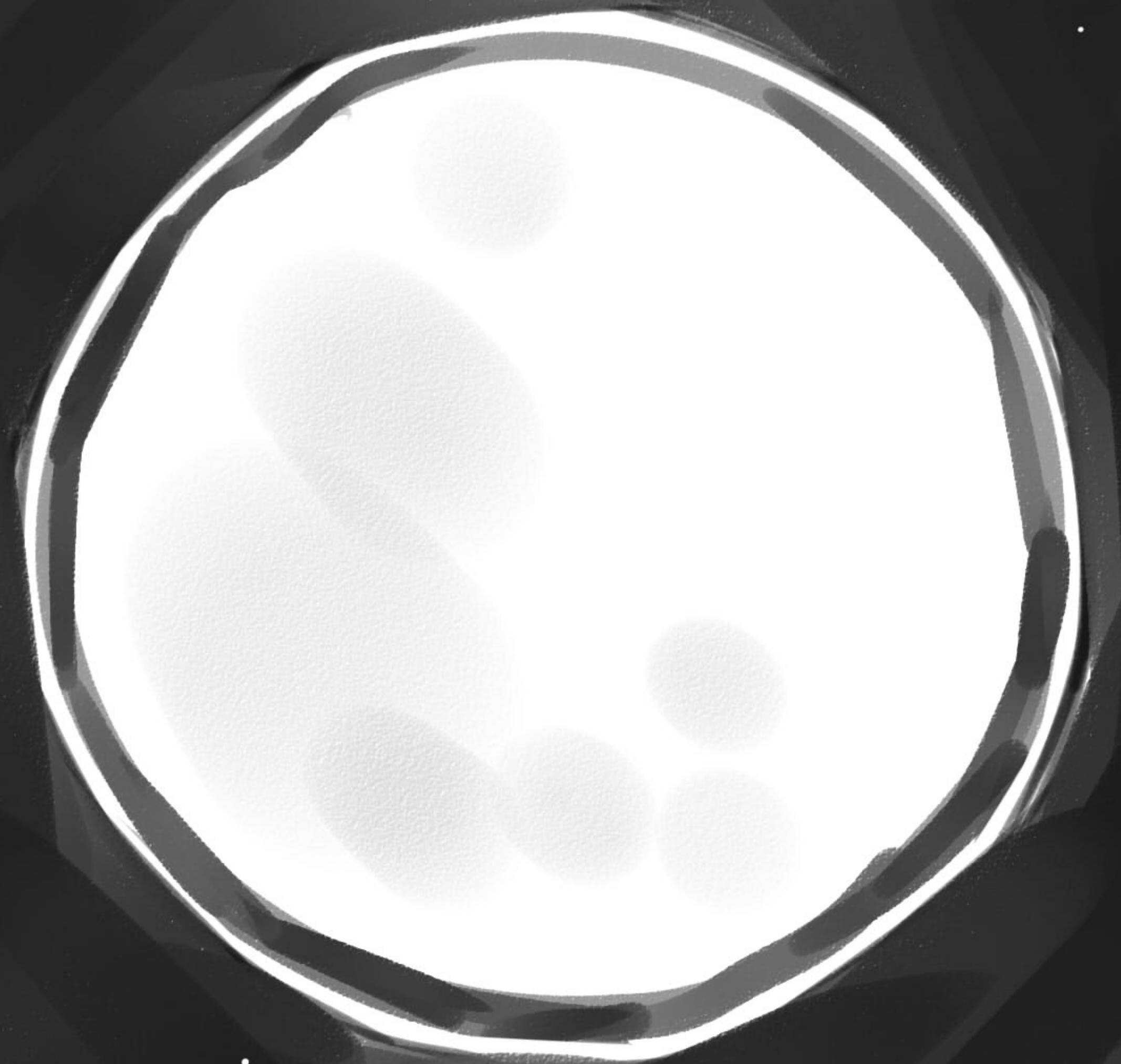












LATER THAT WEEK...





**READY?**






JUST PUT  
IT IN...

**GRONL**...



A hand-drawn sketch of a character's face, possibly a bear or a similar animal, with a speech bubble. The drawing is done in a simple, expressive style with thick black lines. The character has a large, round nose and a wide, open mouth. The speech bubble is located in the upper right corner of the face. The background is plain white.

**OH YOU'RE IN FOR A  
FUCKING TREAT**





STRETCH





**BEAR WITH IT,  
HITOSHI.**

NUZZLE  
NUZZLE

NGH...  
KUH...





*FUCK...*





GRIP

**AH!!**





*BAKUGOU...  
NGH—WAIT—*

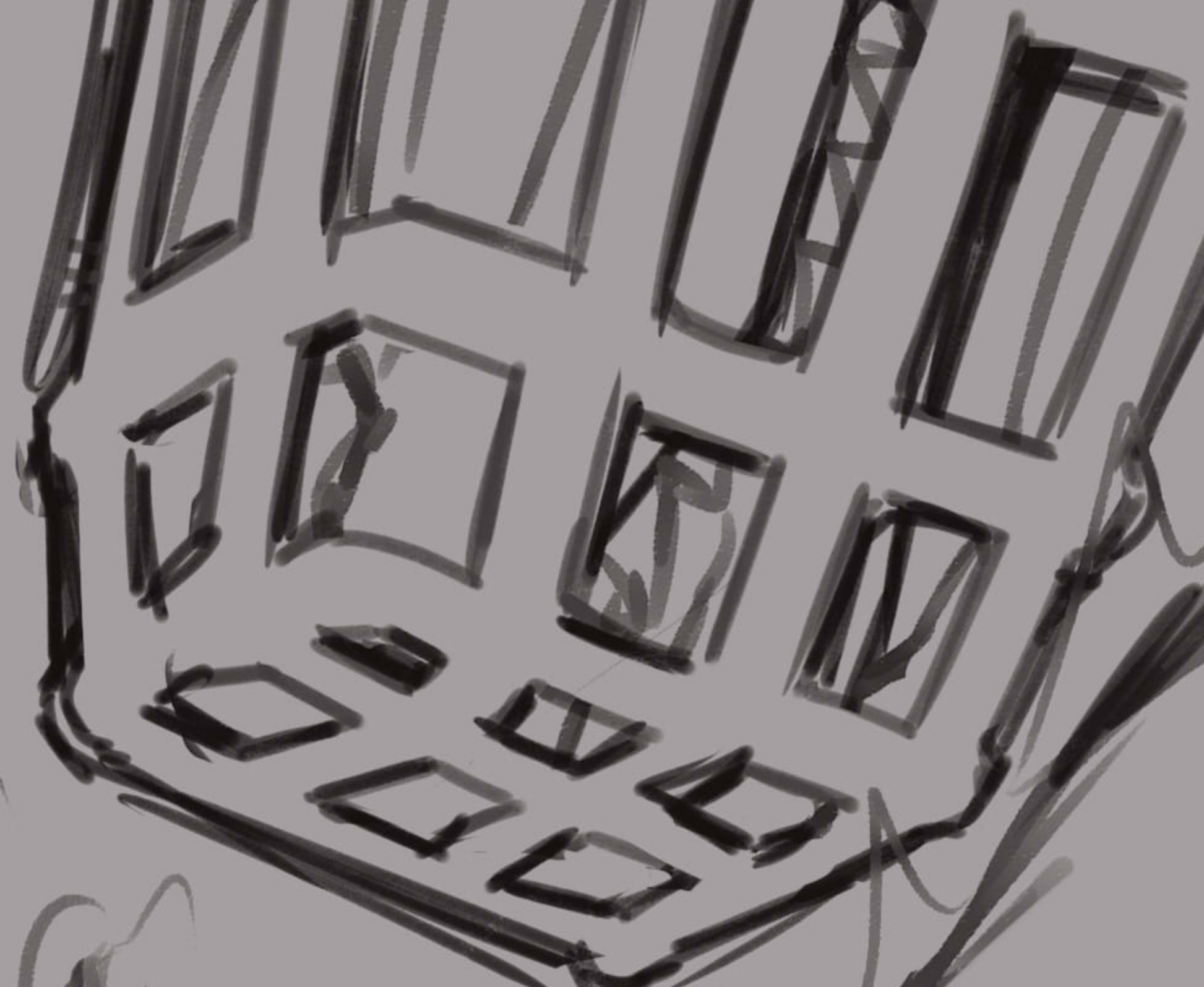
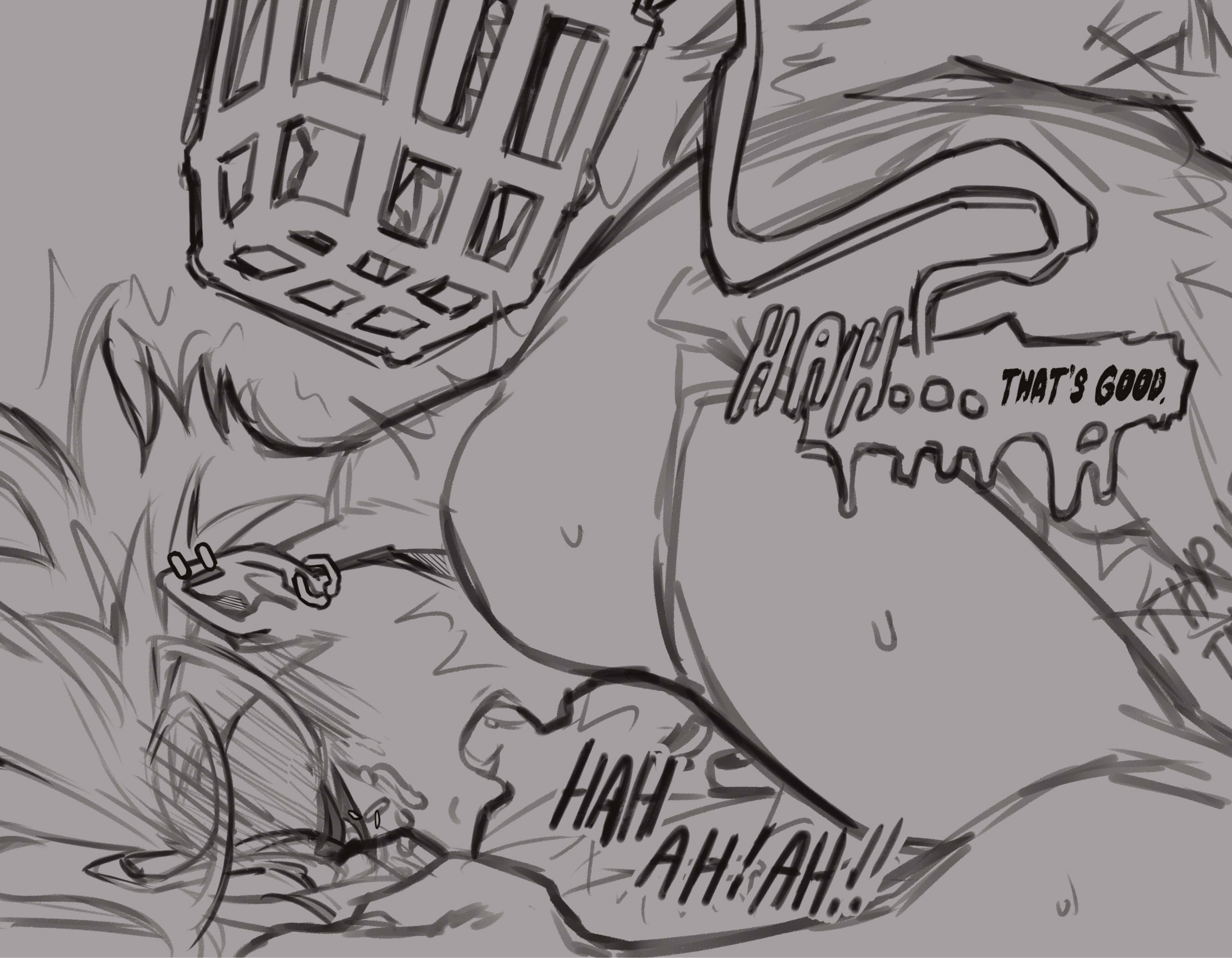












HIAH HIAH HIAH  
THAT'S GOOD.  
HIAH HIAH HIAH

HIAH  
AH! AH!!

