

List of pages in this Trip Kit

Trip Kit Index
Airport Information For EFIV
Terminal Charts For EFIV
Revision Letter For Cycle 12-2018
Change Notices
Notebook

General Information

Location: IVALO FIN
ICAO/IATA: EFIV / IVL
Lat/Long: N68° 36.6', E027° 24.8'
Elevation: 482 ft

Airport Use: Public
Daylight Savings: Observed
UTC Conversion: -2:00 = UTC
Magnetic Variation: 12.0° E

Fuel Types: 100 Octane (LL), Jet A-1
Customs: Yes
Airport Type: IFR
Landing Fee: No
Control Tower: Yes
Jet Start Unit: No
LLWS Alert: No
Beacon: No
Traffic Pattern Altitude: 1301 ft (819 ft AGL)

Sunrise: 24 Hour Day
Sunset: Never

Runway Information

Runway: 04
Length x Width: 8199 ft x 148 ft
Surface Type: asphalt
TDZ-Elev: 482 ft
Lighting: Edge, ALS

Runway: 22
Length x Width: 8199 ft x 148 ft
Surface Type: asphalt
TDZ-Elev: 466 ft
Lighting: Edge, ALS

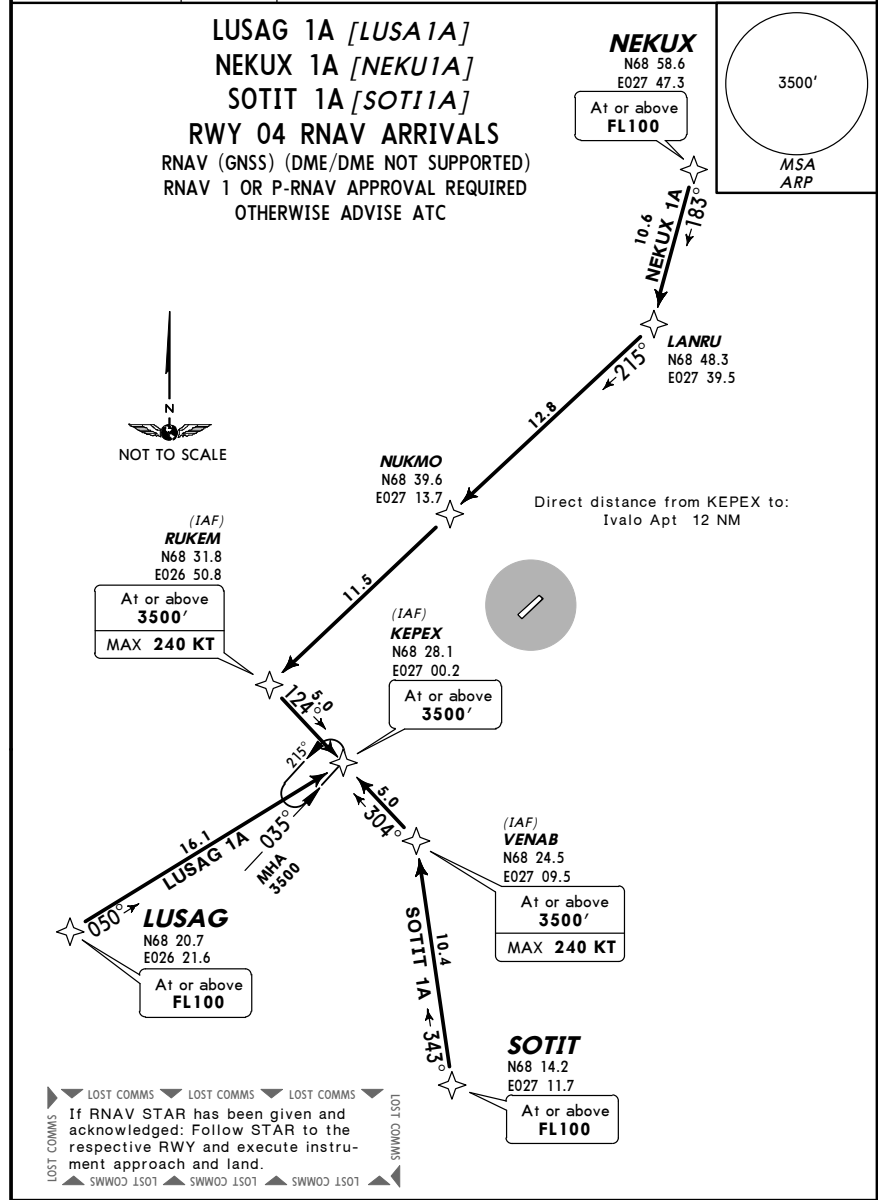
Communication Information

ATIS: 123.200
Ivalo Tower: 118.000
Ivalo Tower: 119.700
Ivalo Information: 119.700 AFIS
Ivalo Information: 118.000 AFIS

D-ATIS 123.2
Apt Elev 482'

Alt Set: hPa Trans level: By ATC Trans alt: 5000'

1. ATC will give descent clearance.
2. Continuous descent by ATC if traffic permits. Plan continuous descent path according to STAR.
3. Altitude/level/speed constraints must always be followed unless explicitly cancelled by ATC.
4. STARs are also minimum noise routes.



STAR	ROUTING
LUSAG 1A	LUSAG (FL100+) - KEPEX (3500'+).
NEKUX 1A	NEKUX (FL100+) - LANRU - NUKMO - RUKEM (3500'+; K240-) - KEPEX (3500'+).
SOTIT 1A	SOTIT (FL100+) - VENAB (3500'+; K240-) - KEPEX (3500'+).

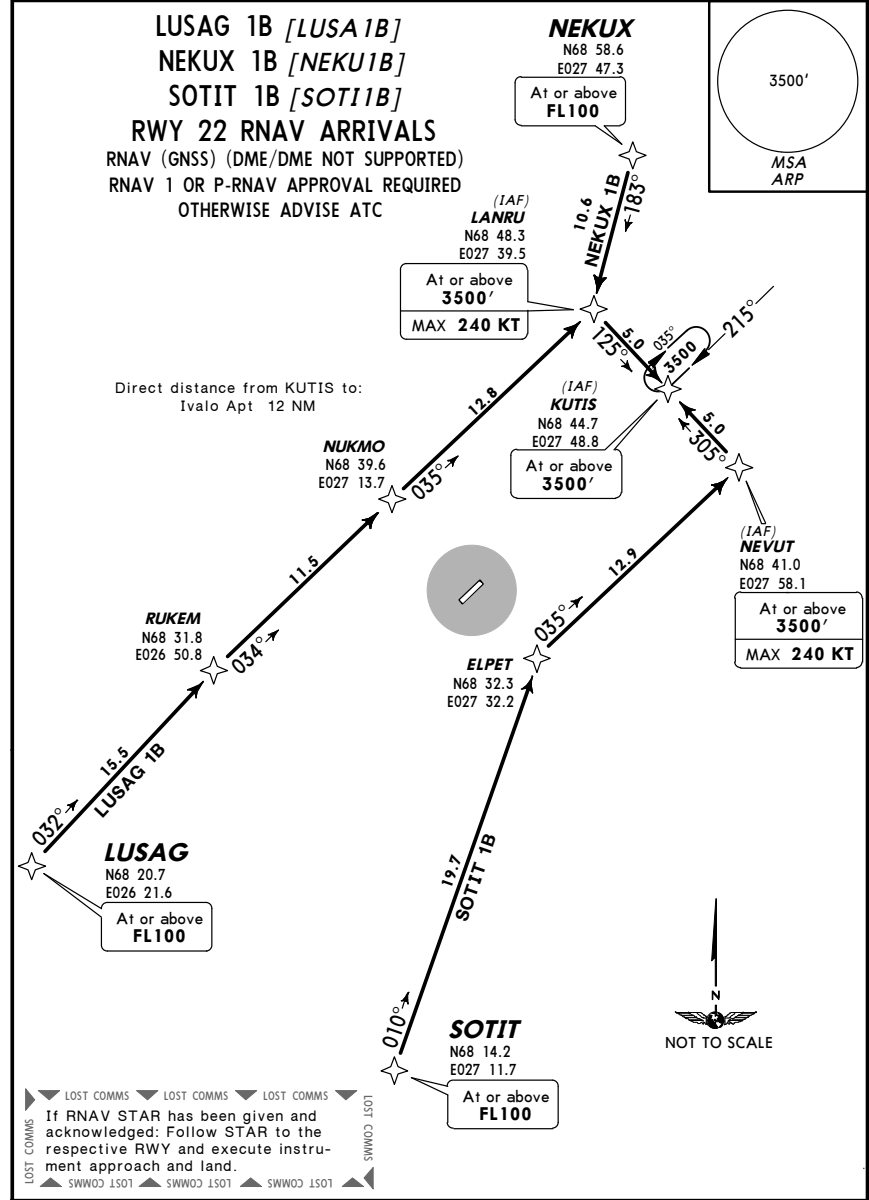
CHANGES: RNAV STARs completely revised.

© JEPPESEN, 2014. ALL RIGHTS RESERVED.

D-ATIS 123.2
Apt Elev 482'

Alt Set: hPa Trans level: By ATC Trans alt: 5000'

1. ATC will give descent clearance.
2. Continuous descent by ATC if traffic permits. Plan continuous descent path according to STAR.
3. Altitude/level/speed constraints must always be followed unless explicitly cancelled by ATC.
4. STARs are also minimum noise routes.



STAR	ROUTING
LUSAG 1B	LUSAG (FL100+) - RUKEM - NUKMO - LANRU (3500'+; K240-) - KUTIS (3500'+).
NEKUX 1B	NEKUX (FL100+) - LANRU (3500'+; K240-) - KUTIS (3500'+).
SOTIT 1B	SOTIT (FL100+) - ELPET - NEVUT (3500'+; K240-) - KUTIS (3500'+).

CHANGES: RNAV STARs completely revised.

© JEPPESEN, 2014. ALL RIGHTS RESERVED.

EFIV/IVL
IVALO

JEPPESEN
7 JUL 17 (10-3) Eff 20 Jul

IVALO, FINLAND
DEPARTURE

Apt Elev 482' Trans level: By ATC Trans alt: 5000'
EXPECT close-in obstacles.

**RWYS 04, 22
OMNIDIRECTIONAL DEPARTURES**

RWY 22

This departure requires a minimum climb gradient of:
219' per NM (3.6%) up to 700'.

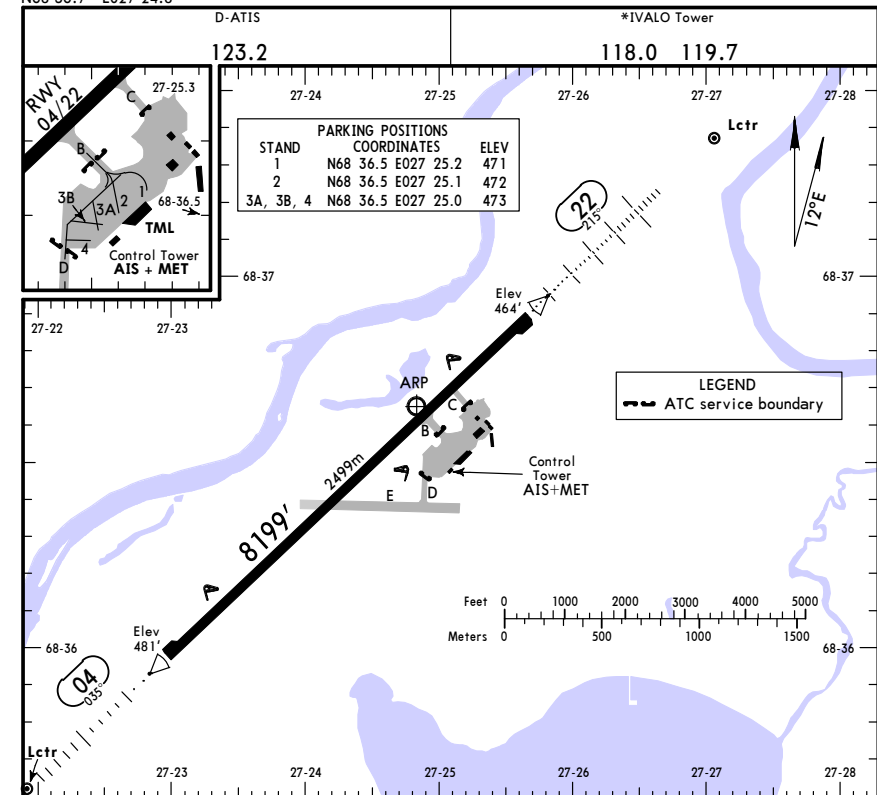
Gnd speed-KT	75	100	150	200	250	300
219' per NM	274	365	548	730	913	1095

RWY	ROUTING
04	Climb straight ahead to at or above 1100'.
22	Climb straight ahead to at or above 1750'.

EFIV/IVL
Apt Elev 482'
N68 36.7 E027 24.8

JEPPESEN
7 JUL 17 (10-9) Eff 20 Jul

IVALO, FINLAND
IVALO



ADDITIONAL RUNWAY INFORMATION

RWY	HIRL	HIALS	PAPI-L (angle)	RVR	USABLE LENGTHS		TAKE-OFF	WIDTH
					Threshold	Glide Slope		
04	1	1	PAPI-L (angle 3.2°)	RVR			2	148'
22	1	1	PAPI-L (angle 3.0°)	RVR	7108'	2167m		45m

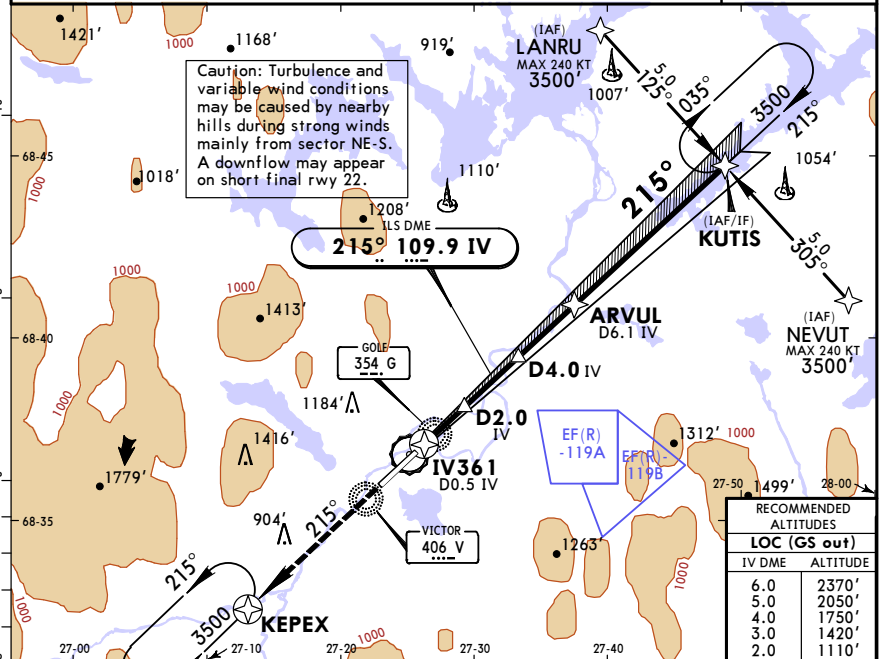
① ALS-(red) also available.
 ② RWY 04: From rwy head 8199' (2499m) twy E int 4583' (1397m)
 RWY 22: From rwy head 8199' (2499m) twy C int 6460' (1969m) twy B int 5866' (1788m) twy E int 3829' (1167m)

Standard TAKE-OFF

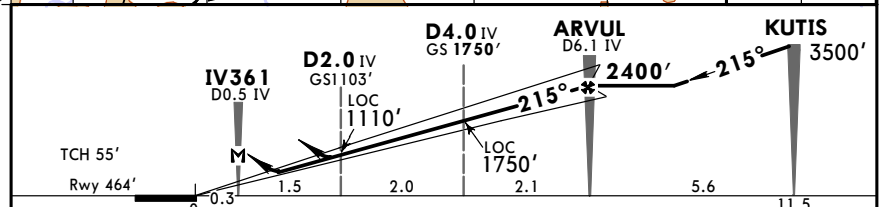
Low Visibility Take-off	Adequate vis ref (Day only)	
Day: RL & RCLM Night: RL	Day: RL or RCLM Night: RL	
RVR 300m	400m	500m

EFIV/IVL IVALO **JEPPESEN** **IVALO, FINLAND**
 11 DEC 15 (11-1) **ILS Z or LOC Z Rwy 22**

D-ATIS 123.2				*IVALO Tower 118.0 119.7			
LOC IV 109.9	Final Apch Crs 215°	GS D4.0 IV 1750' (1286')	ILS DA(H) 664' (200')	Apt Elev 482'	Rwy 464'	3500'	
MISSED APCH: Climb STRAIGHT AHEAD to KEPEX to 3500'.							
Alt Set: hPa				Rwy Elev: 17 hPa		Trans level: By ATC	
GNS and DME required.				Trans alt: 5000'		MSA ARP	



RECOMMENDED ALTITUDES	
LOC (GS out)	IV DME ALTITUDE
6.0	2370'
5.0	2050'
4.0	1750'
3.0	1420'
2.0	1110'

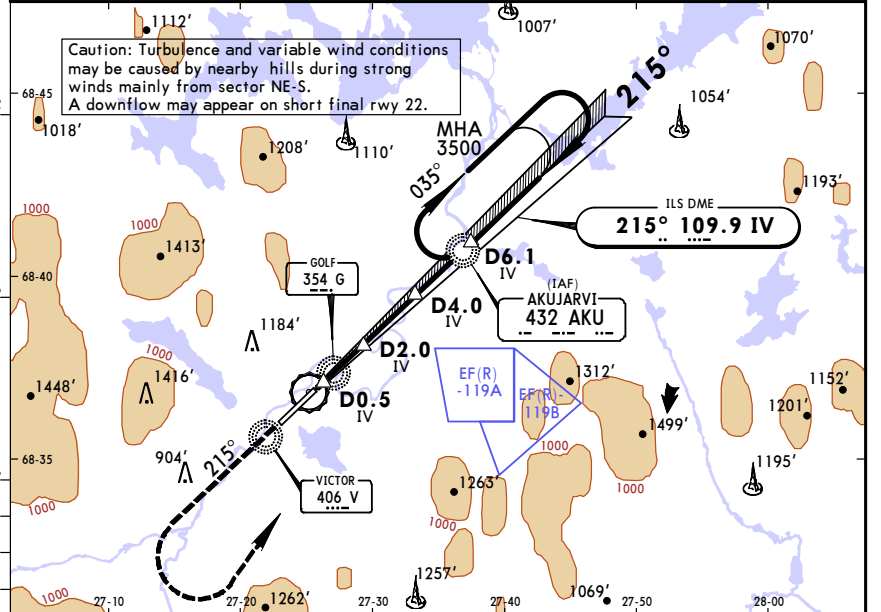


Gnd speed-Kts	70	90	100	120	140	160		
ILS GS or LOC Descent angle	3.00°	372	478	531	637	743		849
MAP at IV361/D0.5 IV								
MAP at D0.5 IV								

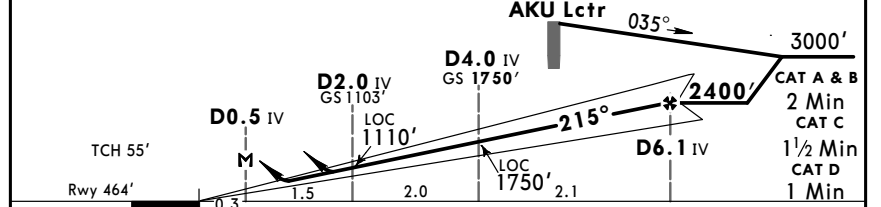
PANS OPS	STRAIGHT-IN LANDING RWY 22				CIRCLE-TO-LAND	
	ILS DA(H) 664' (200')		LOC (GS out) DA(H) 910' (446')		Max Kts	MDA(H) VIS
	FULL	Limited	ALS out	ALS out		
A					100	1410' (928') 1500m
B					135	1480' (998') 1600m
C	RVR 550m	RVR 750m	RVR 1200m	RVR 1400m	180	1810' (1328') 2400m
D				CMV 2100m	205	1810' (1328') 3600m

EFIV/IVL IVALO **JEPPESEN** **IVALO, FINLAND**
 11 DEC 15 (11-2) **ILS Y or LOC Y Rwy 22**

D-ATIS 123.2				*IVALO Tower 118.0 119.7			
LOC IV 109.9	Final Apch Crs 215°	GS D4.0 IV 1750' (1286')	ILS DA(H) 664' (200')	Apt Elev 482'	Rwy 464'	3500'	
MISSED APCH: Climb on track 215° to 2400', then turn LEFT to AKU Lctr climbing to 3500'.							
Alt Set: hPa				Rwy Elev: 17 hPa		Trans level: By ATC	
ADF and DME required.				Trans alt: 5000'		MSA AKU Lctr	



LOC (GS out)	IV DME	2.0	3.0	4.0	5.0	6.0
ALTITUDE		1110'	1420'	1750'	2050'	2370'



Gnd speed-Kts	70	90	100	120	140	160		
ILS GS or LOC Descent angle	3.00°	372	478	531	637	743		849
MAP at D0.5 IV								
MAP at D0.5 IV								

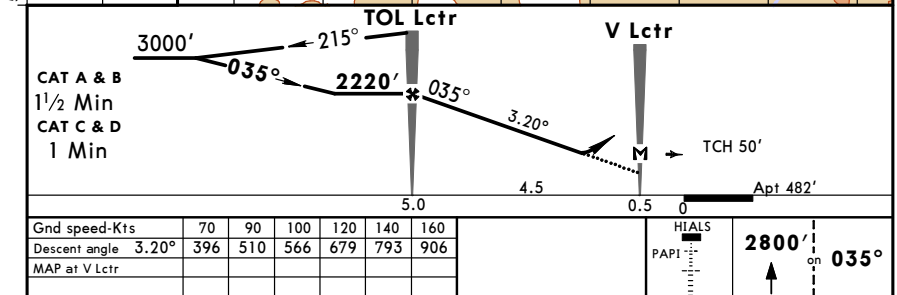
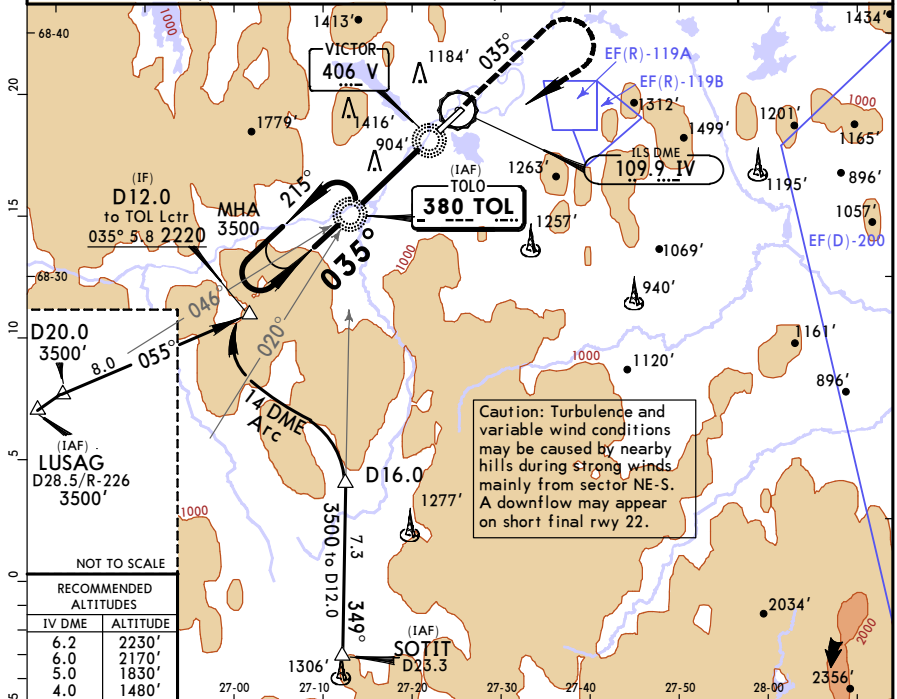
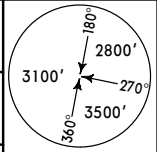
PANS OPS	STRAIGHT-IN LANDING RWY 22				CIRCLE-TO-LAND	
	ILS DA(H) 664' (200')		LOC (GS out) DA(H) 910' (446')		Max Kts	MDA(H) VIS
	FULL	Limited	ALS out	ALS out		
A					100	1410' (928') 1500m
B					135	1480' (998') 1600m
C	RVR 550m	RVR 750m	RVR 1200m	RVR 1400m	180	1810' (1328') 2400m
D				CMV 2100m	205	1810' (1328') 3600m

EFIV/IVL
IVALO

JEPPESEN
11 DEC 15 (16-1)

IVALO, FINLAND
NDB Rwy 04

D-ATIS 123.2			*IVALO Tower 118.0 119.7		
Lctr TOL	Final Apch Crs 035°	Minimum Alt TOL Lctr 2220' (1738')	DA(H) 1150' (668')	Apt Elev 482'	
MISSED APCH: Climb on track 035° to 2800', then turn RIGHT to TOL Lctr climbing to 3500'.					
Alt Set: hPa		Apt Elev: 18 hPa	Trans level: By ATC		Trans alt: 5000'



Standard STRAIGHT-IN LANDING RWY 04		CIRCLE-TO-LAND	
DA(H) 1150' (668')		ALS out	
A		Max Kts	MDA(H) VIS
B	RVR 1500m	100	1410' (928') 1500m
C		135	1480' (998') 1600m
D	CMV 2400m	180	1810' (1328') 2400m
		205	1810' (1328') 3600m

CHANGES: Altitudes.

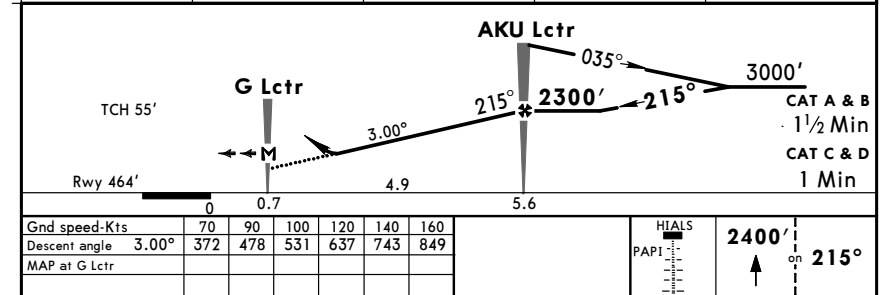
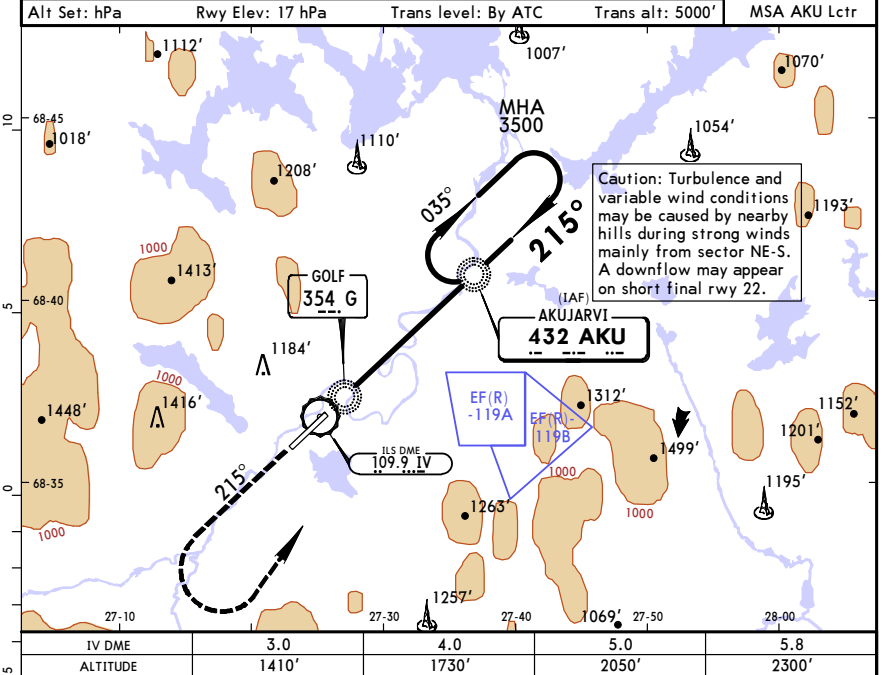
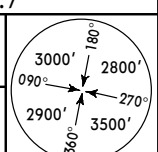
© JEPPESEN, 1999, 2015. ALL RIGHTS RESERVED.

EFIV/IVL
IVALO

JEPPESEN
11 DEC 15 (16-2)

IVALO, FINLAND
NDB Rwy 22

D-ATIS 123.2			*IVALO Tower 118.0 119.7		
Lctr AKU	Final Apch Crs 215°	Minimum Alt AKU Lctr 2300' (1836')	DA(H) 1220' (756')	Apt Elev 482'	
MISSED APCH: Climb on track 215° to 2400', then turn LEFT to AKU Lctr climbing to 3500'.					
Alt Set: hPa		Rwy Elev: 17 hPa	Trans level: By ATC		Trans alt: 5000'



Standard STRAIGHT-IN LANDING RWY 22		CIRCLE-TO-LAND	
DA(H) 1220' (756')		ALS out	
A		Max Kts	MDA(H) VIS
B	RVR 1500m	100	1410' (928') 1500m
C		135	1480' (998') 1600m
D	CMV 2400m	180	1810' (1328') 2400m
		205	1810' (1328') 3600m

CHANGES: None.

© JEPPESEN, 2005, 2015. ALL RIGHTS RESERVED.

Chart changes since cycle 11-2018

ADD = added chart, REV = revised chart, DEL = deleted chart.

ACT PROCEDURE IDENT INDEX REV DATE EFF DATE

IVALO, (IVALO - EFIV)

TERMINAL CHART CHANGE NOTICES

Chart Change Notices for Airport EFIV

Type: Terminal

Effectivity: Temporary

Begin Date: 20180524

End Date: Until Further Notice

(10-9) Construction works Phase 1 are carried out on southern part of apron and on twys D and E (based on SUP 49-18). Stands 3A, 3B and 4 are not in use. Closed areas are marked with flags, cones and temporary lights.

Chart Change Notices for Country FIN

Type: Gen Tmnl

Effectivity: Temporary

Begin Date: Immediately

End Date: Until Further Notice

STARs and SIDs are also minimum noise routings.